

WAAS CH <b>56519</b> <b>W24A</b>	APP CRS <b>243°</b>	Rwy Idg TDZE Apt Elev	<b>5013</b> <b>396</b> <b>398</b>
--	------------------------	-----------------------------	---

# RNAV (GPS) RWY 24

HARRISBURG-RALEIGH (HSB)

RNP APCH.

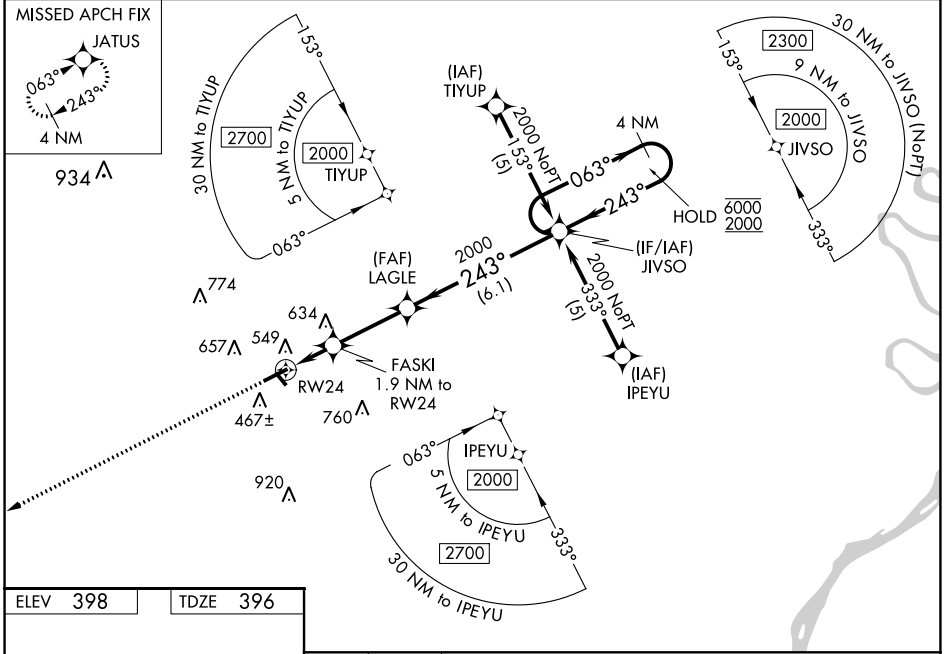
▼ For uncompensated Baro-VNAV systems, LNAV/VNAV NA below -15°C or above 54°C.  
 ▲ Rwy 24 helicopter visibility reduction below ¾ SM NA.

MISSED APPROACH:  
Climb to 2700 direct  
JATUS and hold.

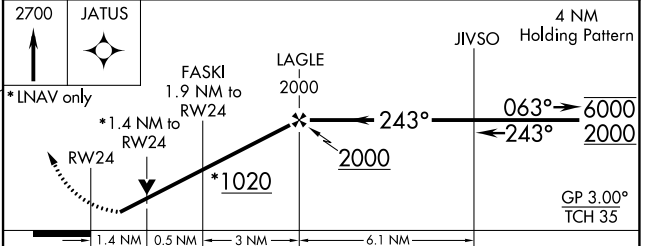
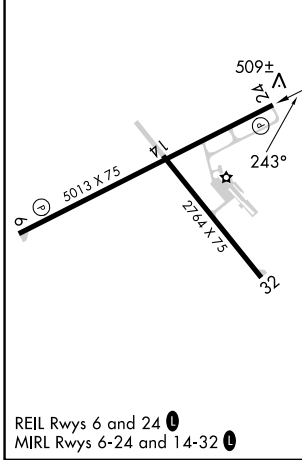
AWOS-3PT  
**135.925**

KANSAS CITY CENTER  
**127.475 346.275**

UNICOM  
**122.8 (CTAF) 0**



ELEV 398	TDZE 396
----------	----------



CATEGORY	A	B	C	D
LPV DA	697-1 301 (300-1)			
LNAV/VNAV DA	859-1¾ 463 (500-1¾)			
LNAV MDA	880-1 484 (500-1)	880-1¼ 484 (500-1¼)	880-1½ 484 (500-1½)	880-1½ 484 (500-1½)
CIRCLING	900-1 502 (600-1)	1020-1 622 (700-1)	1020-1¾ 622 (700-1¾)	1080-2¼ 682 (700-2¼)

EC-3, 26 DEC 2024 to 23 JAN 2025

EC-3, 26 DEC 2024 to 23 JAN 2025