

WAAS CH <b>63119</b> <b>W06A</b>	APP CRS <b>063°</b>	Rwy Idg TDZE Apt Elev	<b>5013</b> <b>394</b> <b>398</b>
--	------------------------	-----------------------------	---

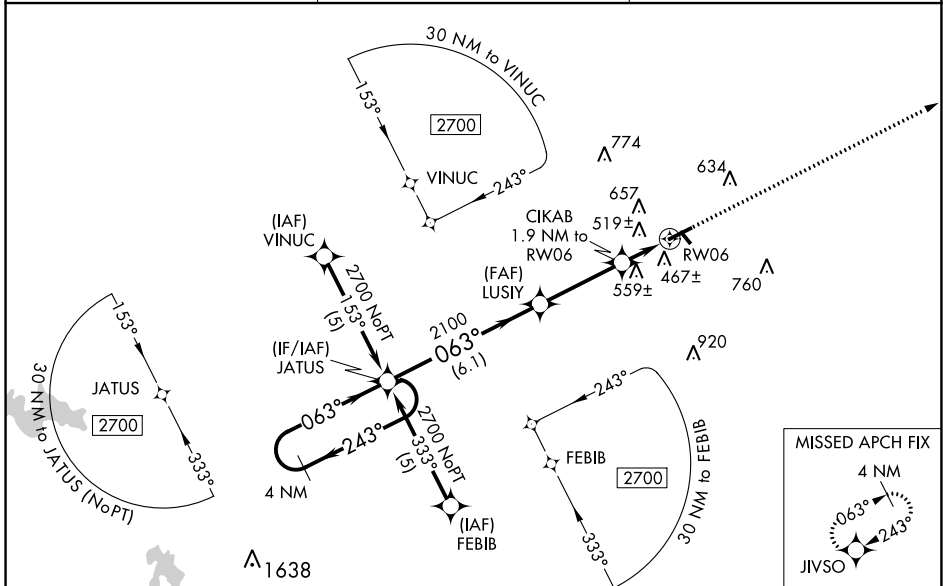
# RNAV (GPS) RWY 6

HARRISBURG-RALEIGH (HSB)

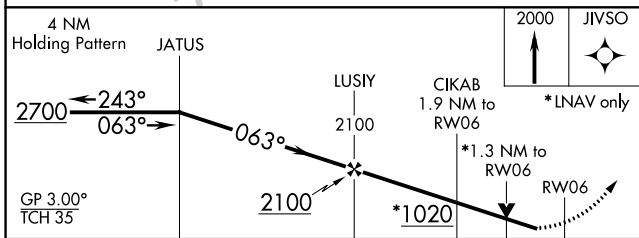
Baro-VNAV NA when using Williamson County Rgnl altimeter setting. For uncompensated Baro-VNAV systems, LNAV/VNAV NA below -15°C (5°F) or above 48°C (118°F). DME/DME RNP-0.3 NA. Visibility reduction by helicopters NA. When local altimeter setting not received, use Marion altimeter setting: increase LPV DA to 744 feet; increase LNAV/VNAV DA to 1020 feet; increase all MDAs 80 feet and LNAV visibility Cat C/D 1/4 SM and Circling visibility Cat C/D 1/4 SM. VDP NA with Williamson County Rgnl altimeter setting.

MISSED APPROACH:  
Climb to 2000 direct JIVSO and hold.

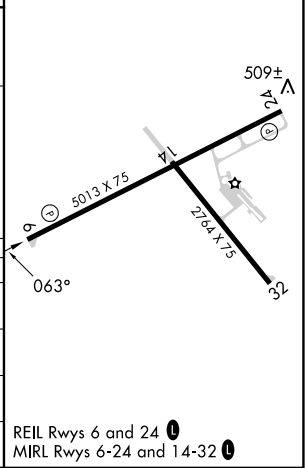
AWOS-3PT <b>135.925</b>	KANSAS CITY CENTER <b>127.475 346.275</b>	UNICOM <b>122.8 (CTAF) 0</b>
----------------------------	--	---------------------------------



ELEV 398	TDZE 394
----------	----------



CATEGORY	A	B	C	D
LPV DA		682-1	288 (300-1)	
LNAV/VNAV DA		958-2	564 (600-2)	
LNAV MDA	820-1	426 (500-1)	820-1¼	426 (500-1¼)
CIRCLING	900-1 502 (600-1)	1020-1 622 (700-1)	1020-1¾ 622 (700-1¾)	1080-2¼ 682 (700-2¼)



EC-3, 26 DEC 2024 to 23 JAN 2025

EC-3, 26 DEC 2024 to 23 JAN 2025