

APP CRS	Rwy Idg	<b>4000</b>
<b>163°</b>	TDZE	<b>746</b>
	Apt Elev	<b>746</b>

# RNAV (GPS) RWY 16

SHERMAN MUNI (SWI)

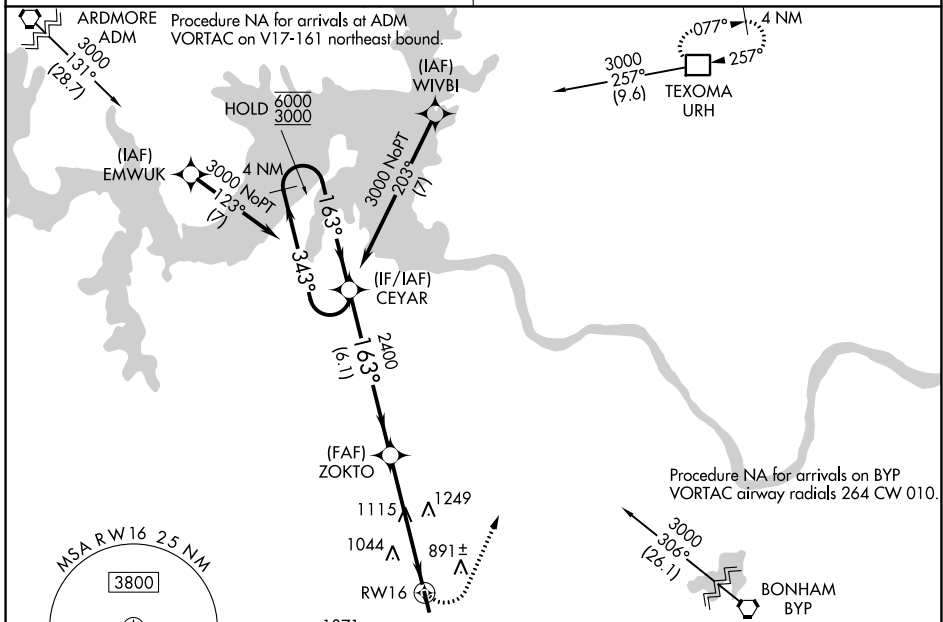
**RNP APCH**

**NA** Use Sherman/Denison altimeter setting, if not received use Dallas Love Fld altimeter setting and increase all MDA 140 feet and increase LNAV visibility Cat B ¼ SM, Cat C ½ SM, and increase Circling visibility Cats A/B ¼ SM, Cat C ½ SM. Procedure NA at night. Rwy 16 helicopter visibility reduction below 1 SM NA.

**MISSED APPROACH:** Climbing left turn to 3000 direct URH DME and hold.

**FORT WORTH CENTER**  
**124.75 323.0**

**UNICOM**  
**122.8 (CTAF) 0**



**4 NM Holding Pattern**

CEYAR

ZOKTO

RWY 16

6000 ← 343°

3000 → 163°

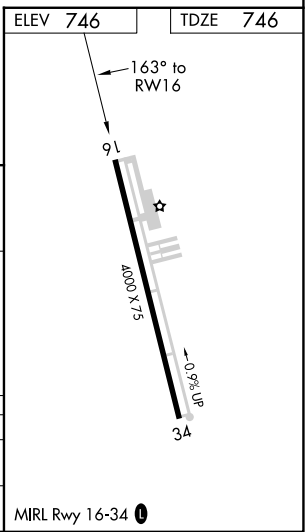
2400

3.00° TCH 45

6.1 NM

5.1 NM

CATEGORY	A	B	C	D
LNAV MDA	1440-1	694 (700-1)	1440-2 694 (700-2)	NA
CIRCLING	1440-1	694 (700-1)	1620-2½ 874 (900-2½)	NA



SC-2, 26 DEC 2024 to 23 JAN 2025

SC-2, 26 DEC 2024 to 23 JAN 2025