

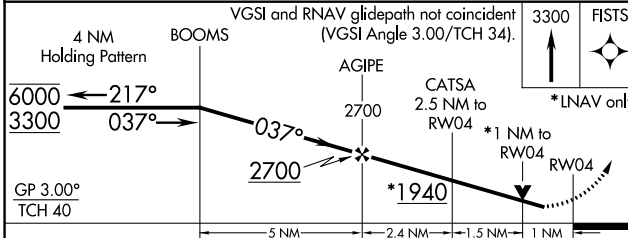
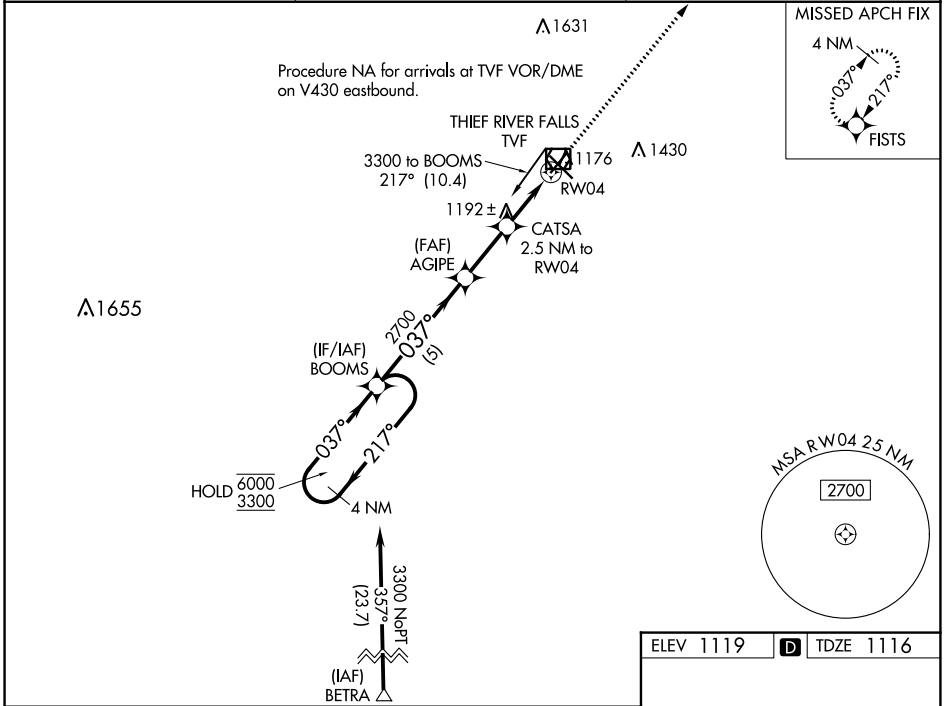
WAAS CH 70636 W04A	APP CRS 037°	Rwy Idg TDZE 1116 Apt Elev 1119	4997 1116 1119
--	------------------------	---	---

RNAV (GPS) RWY 4

THIEF RIVER FALLS RGNL (TVF)

RNP APCH.	MISSED APPROACH: Climb to 3300 direct FISTS and hold.
Rwy 4 helicopter visibility reduction below 3/4 SM NA. For uncompensated Baro-VNAV systems, LNAV/VNAV NA below -17°C or above 54°C.	

AWOS-3PT 119.025	MINNEAPOLIS CENTER 132.15 269.6	UNICOM 122.8(CTAF) 0
----------------------------	---	--------------------------------



ELEV 1119 TDZE 1116

13 22

1168 ±

1997 X 179

6504 X 150

AS

037°

HIRL Rwy 13-31

MIRL Rwy 4-22

REIL Rws 4, 13 and 22

CATEGORY	A	B	C	D
LPV DA	1366-1	250 (300-1)		NA
LNAV/VNAV DA	1366-1	250 (300-1)		NA
LNAV MDA	1460-1	344 (400-1)		NA
CIRCLING	1540-1 421 (500-1)	1580-1 461 (500-1)		NA

NC-1, 26 DEC 2024 to 23 JAN 2025

NC-1, 26 DEC 2024 to 23 JAN 2025