

APP CRS	Rwy Idg	4855
179°	TDZE	912
	Apt Elev	912

RNAV (GPS) RWY 18

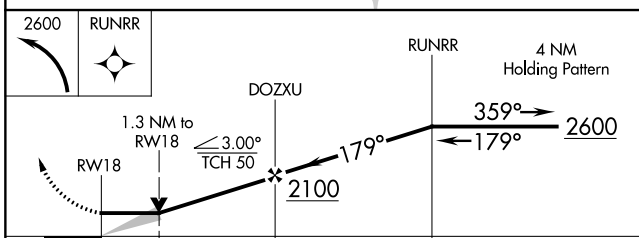
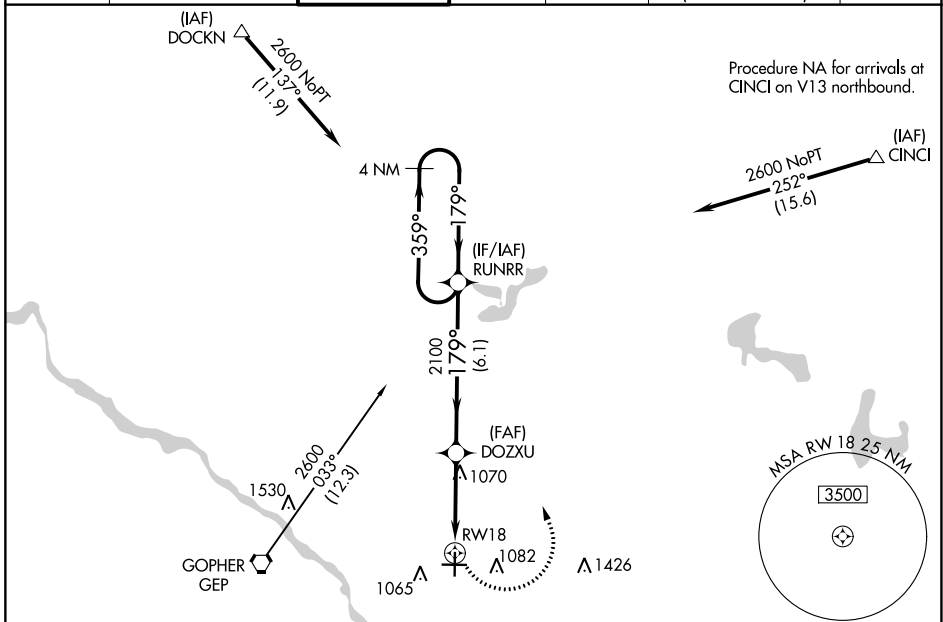
ANOKA COUNTY/BLAINE (JANES FLD) (A.N.E.)

RNP APCH - GPS.

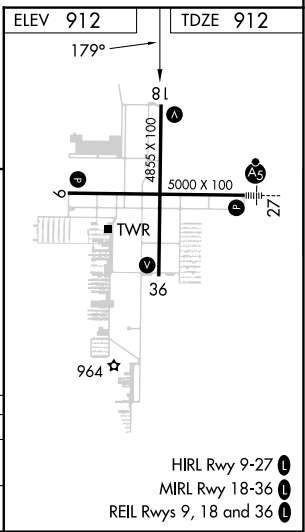
⚠ When local altimeter setting not received, use Crystal altimeter setting and increase all MDA 40 feet and Circling Cat D visibility ¼ SM. VDP NA when using Crystal altimeter setting.

MISSED APPROACH: Climbing left turn to 2600 direct RUNRR and hold.

ATIS 120.625	MINNEAPOLIS APP CON 126.5 335.65	ANOKA TOWER* 132.4 (CTAF) 0	GND CON 121.85	CLNC DEL 121.3	CLNC DEL 121.85 (When twr closed)	UNICOM 122.95
------------------------	--	---------------------------------------	--------------------------	--------------------------	--	-------------------------



CATEGORY	A	B	C	D
LNNAV MDA	1380-1	468 (500-1)	1380-1⅓	468 (500-1⅓)
CIRCLING	1400-1	488 (500-1)	1460-1½	1580-2
			548 (600-1½)	668 (700-2)



NC-1, 26 DEC 2024 to 23 JAN 2025

NC-1, 26 DEC 2024 to 23 JAN 2025