

# WLSTN SEVEN DEPARTURE

AL-5202 (FAA)

MINNEAPOLIS, MINNESOTA

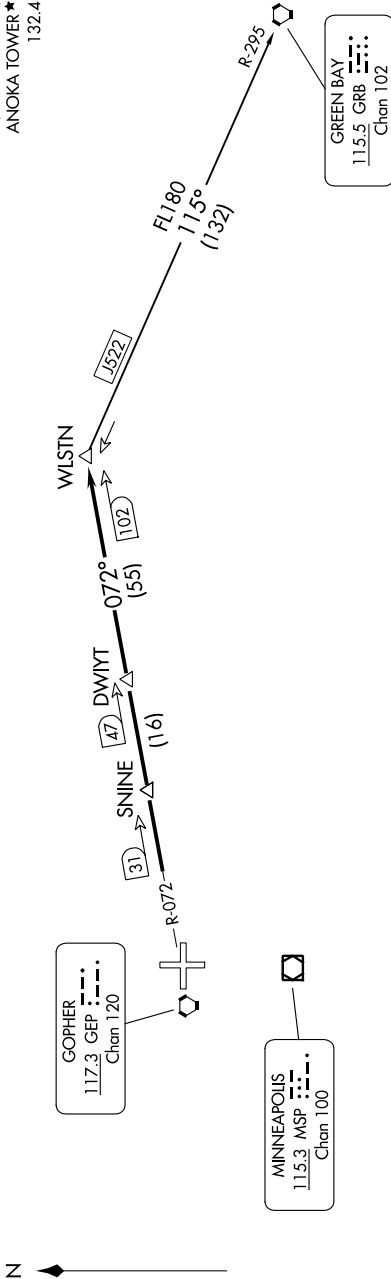
NC-1, 26 DEC 2024 to 23 JAN 2025

### TAKEOFF MINIMUMS

- Rwy 9: Standard with minimum climb of 341' per NM to 3000.
- Rwy 18: Standard with minimum climb of 371' per NM to 3000.
- Rwy 27: Standard with minimum climb of 259' per NM to 2800.
- Rwy 36: Standard with minimum climb of 259' per NM to 2800.

**TOP ALTITUDE:**  
**(JETS) 7000/**  
**(PROPS) 5000**

MINNEAPOLIS DEP CON  
 126.5 335.65  
 ATIS  
 120.625  
 CLNC DEL  
 121.3  
 CLNC DEL  
 121.3  
 ANOKA TOWER ★  
 121.85 (when hvr closed)  
 132.4



### DEPARTURE ROUTE DESCRIPTION

**TAKEOFF ALL RUNWAYS:** Fly assigned heading and altitude for RADAR vectors to GEP R-072 to WLSTN/GEP 102 DME. Thence . . . .

. . . . on assigned transition or assigned route. Expect clearance to filed altitude/flight level 10 (ten) minutes after departure.

**GREEN BAY TRANSITION (WLSTN7.GRB):** From over WLSTN on GRB R-295 to GRB VORTAC.

NOTE: RADAR required.  
 NOTE: Chart not to scale.

# WLSTN SEVEN DEPARTURE

NC-1, 26 DEC 2024 to 23 JAN 2025