

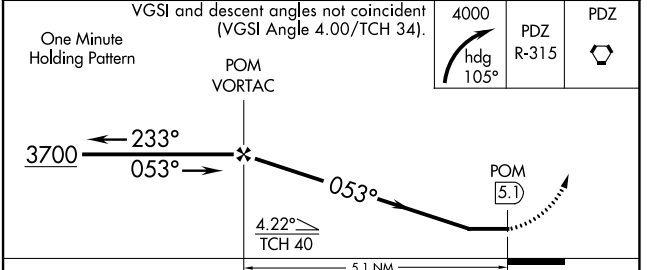
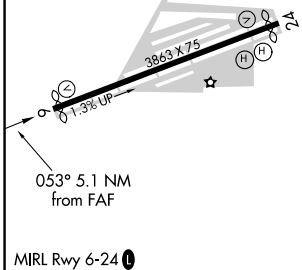
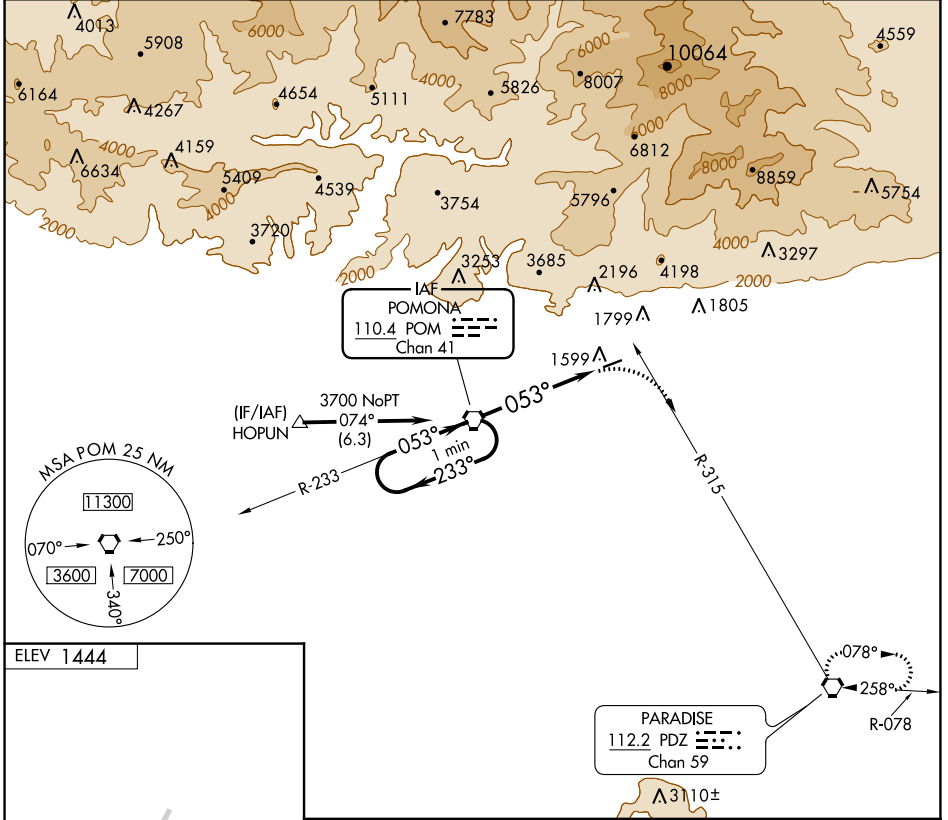
VORTAC POM <b>110.4</b> Chan 41	APP CRS <b>053°</b>	Rwy Idg TDZE Apt Elev <b>N/A</b> <b>N/A</b> <b>1444</b>
---------------------------------------	------------------------	--

**VOR-A**  
CABLE (CCB)

**NA** Circling NA northwest of Rwy 6-24. Procedure NA at night.  
When local altimeter setting not received, use Ontario altimeter setting and increase all MDA 100 feet and all visibilities ½ SM.  
Rwy 24 helicopter visibility reduction below 1 SM NA.

MISSED APPROACH: Climbing right turn to 4000 via heading 105° and PDZ R-315 to PDZ VORTAC and hold.

AWOS-3P <b>119.525</b>	SOCAL APP CON <b>125.5 349.0</b>	UNICOM <b>123.0 (CTAF) 0</b>
---------------------------	-------------------------------------	---------------------------------



FAF to MAP 5.1 NM					
Knots	60	90	120	150	180
Min:Sec	5:06	3:24	2:33	2:02	1:42
CATEGORY	A	B	C	D	
<b>CIRCLING</b>	2240-1	796 (800-1)	2240-2¼ 796 (800-2¼)	NA	

SW-3, 26 DEC 2024 to 23 JAN 2025

SW-3, 26 DEC 2024 to 23 JAN 2025