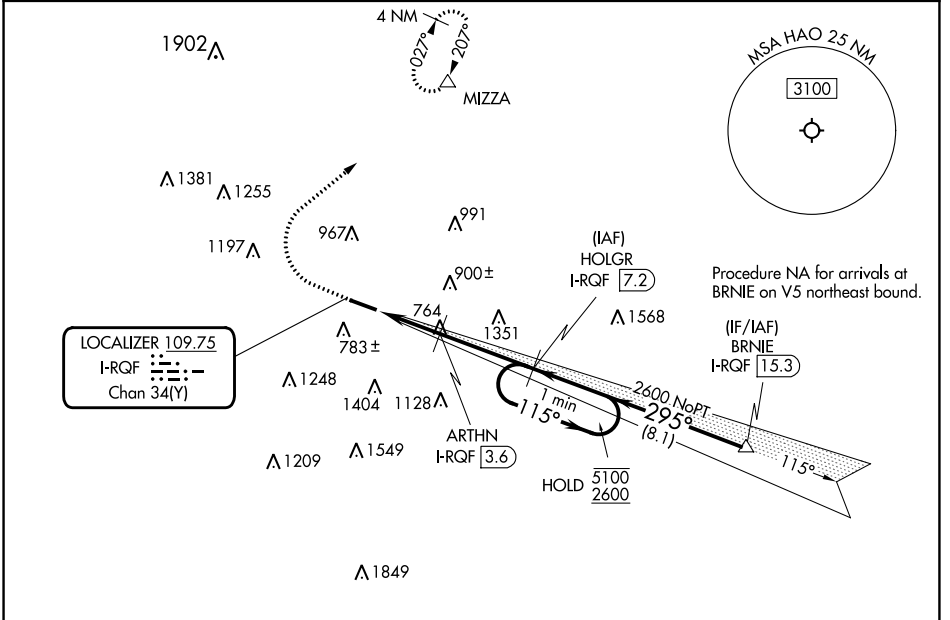


LOC/DME I-RQF 109.75 Chan 34 (Y)	APP CRS 295°	Rwy Idg TDZE Apt Elev	5500 619 632
--	------------------------	-----------------------------	---

ILS or LOC RWY 29

BUTLER COUNTY RGNL/HOGAN FLD (HAO)

RNP APCH - GPS DME required.		MALS	MISSED APPROACH: Climb to 1600 then climbing right turn to 2600 direct MIZZA and hold.
▼ ▲ Inop table does not apply to S-ILS 29.		⊙	
ASOS 121.425	CINCINNATI APP CON 121.0 254.25	CLNC DEL 126.25	UNICOM 123.05 (CTAF) 1



EC-2, 26 DEC 2024 to 23 JAN 2025

EC-2, 26 DEC 2024 to 23 JAN 2025

ELEV 632	TDZE 619
----------	----------

Diagram illustrating the holding pattern for RWY 29. Key features include:

- Altitudes: 1600, 2600, 5100, 2600.
- Angles: 115°, 295°.
- Distances: 1.3 NM, 1.2 NM, 3.6 NM.
- Navigation Aids: MIZZA (triangle symbol), ARTHN (I-RQF 3.6), HOLGR (I-RQF 7.2).
- GS 3.00° TCH 46.
- 5500 X 100.
- 295°.

CATEGORY	A	B	C	D
S-ILS 29		819-3/4	200 (200-3/4)	
S-LOC 29	1080-3/4	461 (500-3/4)	1080-1/8	461 (500-1/8)
Ⓢ CIRCLING	1280-1	648 (700-1)	1300-1 3/4 668 (700-1 3/4)	1760-3 1128 (1200-3)

MIRL Rwy 11-29 1
REIL Rwys 11 and 29 1

FAF to MAP 6.1 NM

Knots	60	90	120	150	180
Min:Sec	6:06	4:04	3:03	2:26	2:02