

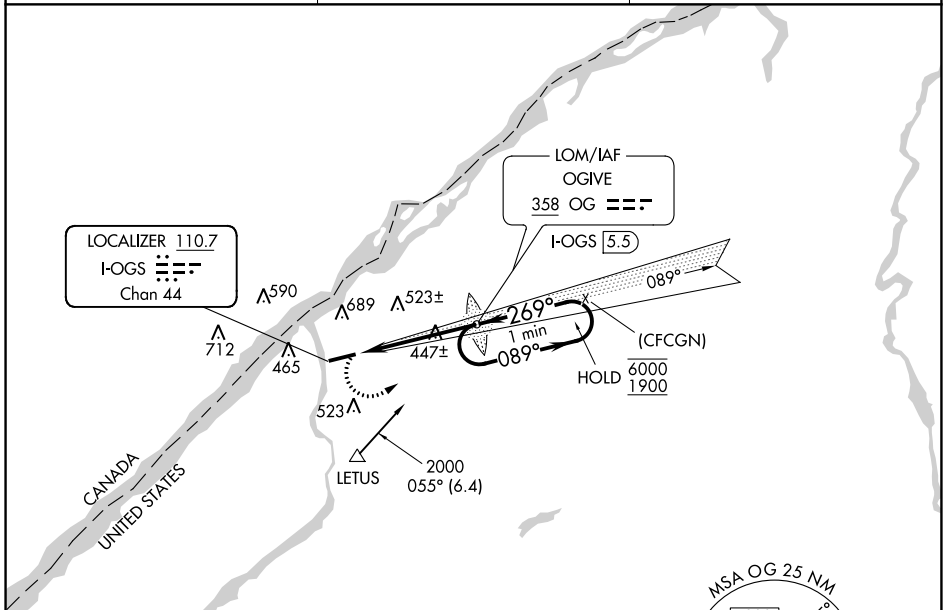
LOC/DME I-OGS <b>110.7</b> Chan <b>44</b>	APP CRS <b>269°</b>	Rwy Idg TDZE Apt Elev	<b>6035</b> <b>302</b> <b>302</b>
---	------------------------	-----------------------------	---

# LOC RWY 27

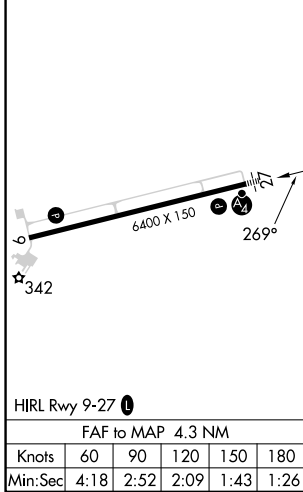
OGDENSBURG INTL (OGS)

ADF required.	MALSF	MISSED APPROACH: Climbing left turn to 2000 direct OGVIE LOM and hold.
<p><b>▽</b> VDP NA when using Massena altimeter setting. When local altimeter setting not received, use Massena altimeter setting and increase all MDA 100 feet and S-LOC 27 and Circling visibility Cat C/D ¼ SM.</p> <p><b>△</b> NA</p>		

AWOS-3 <b>118.525</b>	BOSTON CENTER <b>135.25 377.1</b>	UNICOM <b>122.8 (CTAF)</b>
--------------------------	--------------------------------------	-------------------------------



ELEV 302	<b>D</b>	TDZE 302
----------	----------	----------



2000	OG	VGSI and descent angles not coincident (VGSI Angle 3.00/TCH 45).	OG LOM	One Minute Holding Pattern
			I-OGS 5.5	
	I-OGS 2.4		089°	6000
	I-OGS 1.2		269°	1900
		3.38° TCH 45		
		1.2	3.1 NM	
CATEGORY	A	B	C	D
S-27	740-1	438 (500-1)	740-1¼	438 (500-1¼)
<b>C</b> CIRCLING	760-1	1000-1	1000-2	1000-2¼
	458 (500-1)	698 (700-1)	698 (700-2)	698 (700-2¼)

NE-2, 26 DEC 2024 to 23 JAN 2025

NE-2, 26 DEC 2024 to 23 JAN 2025