

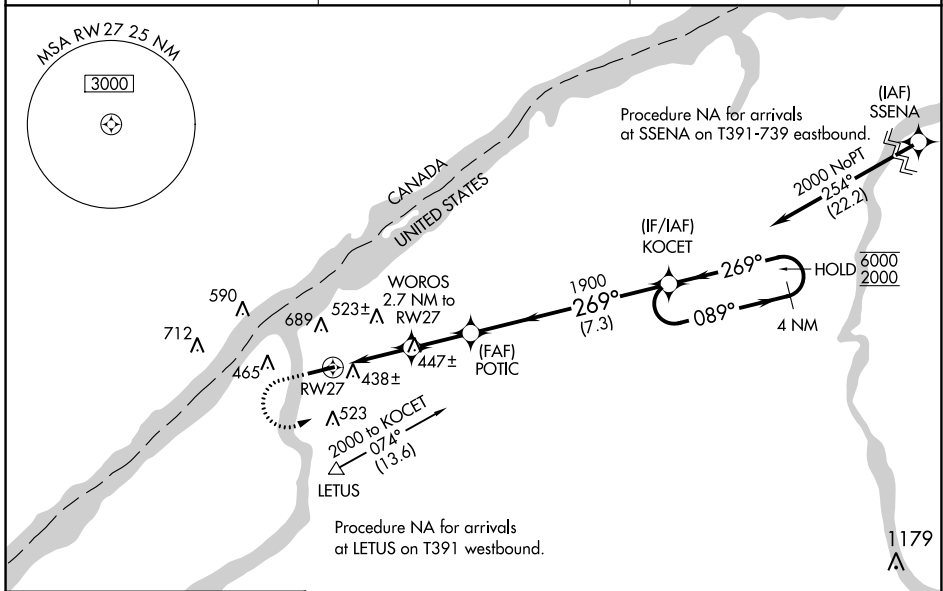
WAAS CH <b>40041</b> <b>W27A</b>	APP CRS <b>269°</b>	Rwy Idg TDZE Apt Elev	<b>6035</b> <b>302</b> <b>302</b>
--	------------------------	-----------------------------	---

# RNAV (GPS) RWY 27

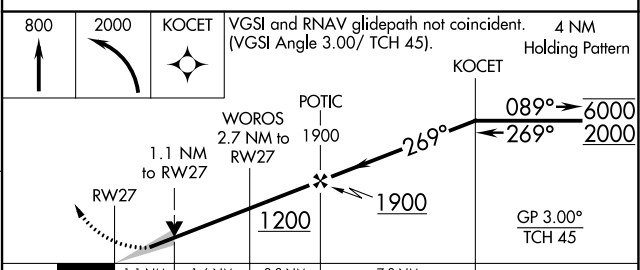
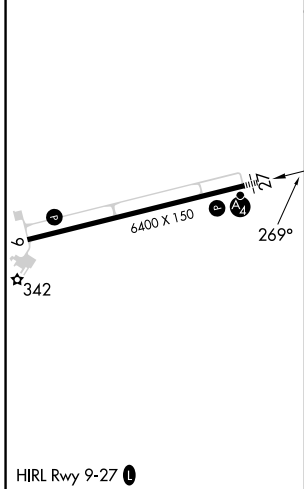
OGDENSBURG INTL (OGS)

RNP APCH - GPS.	MALSF	MISSED APPROACH: Climb to 800 then climbing left turn to 2000 direct KOCET and hold.
<p>For uncompensated Baro-VNAV systems, LNAV/VNAV NA below -15°C or above 54°C.</p>		

AWOS-3 <b>118.525</b>	BOSTON CENTER <b>135.25 377.1</b>	UNICOM <b>122.8 (CTAF) 0</b>
--------------------------	--------------------------------------	---------------------------------



ELEV 302	<b>D</b>	TDZE 302
----------	----------	----------



CATEGORY	A	B	C	D
LPV DA		552- <sup>3</sup> / <sub>4</sub>	250 (300- <sup>3</sup> / <sub>4</sub> )	
LNAV/VNAV DA		717-1 <sup>1</sup> / <sub>8</sub>	415 (500-1 <sup>1</sup> / <sub>8</sub> )	
LNAV MDA	700-1	398 (400-1)	700-1 <sup>1</sup> / <sub>8</sub>	398 (400-1 <sup>1</sup> / <sub>8</sub> )
<b>C</b> CIRCLING	760-1 458 (500-1)	1000-1 698 (700-1)	1000-2 698 (700-2)	1000-2 <sup>1</sup> / <sub>4</sub> 698 (700-2 <sup>1</sup> / <sub>4</sub> )

NE-2, 26 DEC 2024 to 23 JAN 2025

NE-2, 26 DEC 2024 to 23 JAN 2025