

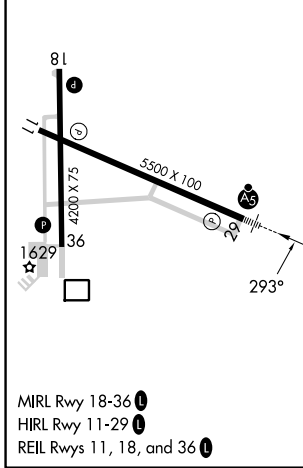
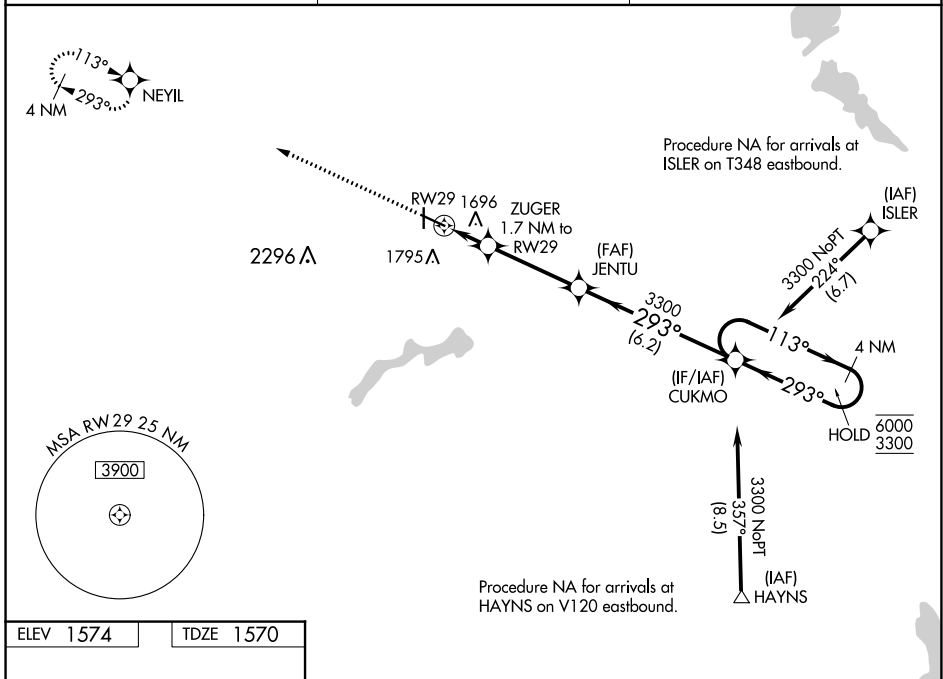
WAAS CH 45930 W29A	APP CRS 293°	Rwy Idg TDZE Apt Elev	5500 1570 1574
--	------------------------	-----------------------------	---

RNAV (GPS) RWY 29

WORTHINGTON MUNI (OTG)

RNP APCH-GPS.	MALSR 	MISSED APPROACH: Climb to 3300 direct NEYIL and hold.
<p> For uncompensated Baro-VNAV systems, LNAV/VNAV NA below -23°C or above 54°C. For inop ALS, increase LNAV/VNAV all Cats visibility to 7/5 SM.</p>		

AWOS-3PT 121.075	MINNEAPOLIS CENTER 132.05 317.4	UNICOM 122.8 (CTAF) 0
----------------------------	---	---------------------------------



3300	↑	NEYIL		JENTU	CUKMO	4 NM Holding Pattern
			ZUGER 1.7 NM to RWY 29	3300		
			1.1 NM to RWY 29	2160	293°	113° → 6000 ← 293° 3300
			1.1 NM	0.6 NM	3.6 NM	6.2 NM
CATEGORY		A	B	C	D	
LPV DA			1770-1/2	200 (200-1/2)		
LNAV/VNAV DA			1867-1/2	297 (300-1/2)		
LNAV MDA		1960-1/2	390 (400-1/2)	1960-5/8	390 (400-5/8)	
CIRCLING		2100-1	526 (600-1)	2100-1 1/2 526 (600-1 1/2)	2320-2 1/2 746 (800-2 1/2)	

GP 3.00°
TCH 43

NC-1, 26 DEC 2024 to 23 JAN 2025

NC-1, 26 DEC 2024 to 23 JAN 2025