

WAAS CH 90223 W05A	APP CRS 055°	Rwy Idg TDZE 904 Apt Elev 921	5004
--	------------------------	---	-------------

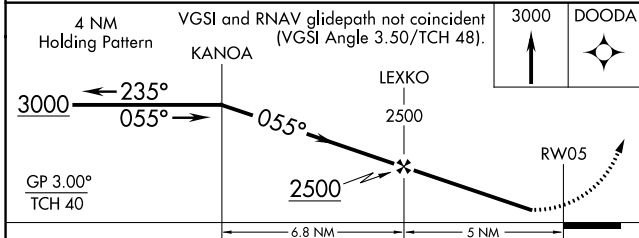
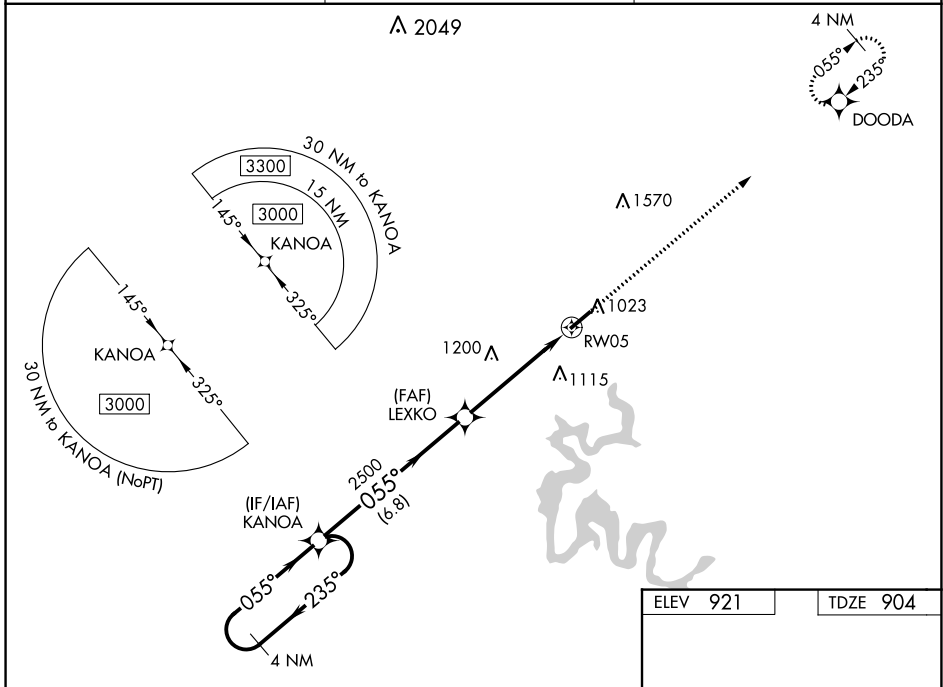
RNAV (GPS) RWY 5

TAYLOR COUNTY (AAS)

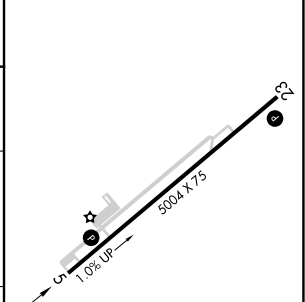
⚠ Baro-VNAV NA when using Somerset altimeter setting. For uncompensated Baro-VNAV systems, LNAV/VNAV NA below -16°C (4°F) or above 54°C (130°F). DME/DME RNP-0.3 NA. When local altimeter setting not received, use Somerset altimeter setting: increase all DA 89 feet and all MDA 100 feet; increase LPV all Cats visibility ¼ mile, increase LNAV/VNAV all Cats visibility ⅜ mile, increase LNAV Cats C and D visibility ¼ mile, and increase Circling Cat C visibility ¼ mile and Cat D visibility ½ mile. Helicopter visibility reduction below ¼ SM NA. Night landing: Rwy 5 NA for Cat C and D aircraft.

MISSED APPROACH:
Climb to 3000 direct DOODA and hold.

AWOS-3 121.125	INDIANAPOLIS CENTER 124.625 353.65	UNICOM 122.7 (CTAF) 0
--------------------------	--	---------------------------------



ELEV 921	TDZE 904
-----------------	-----------------



CATEGORY	A	B	C	D
LPV DA		1154-1	250 (300-1)	
LNAV/VNAV DA		1389-1¾	485 (500-1¼)	
LNAV MDA	1340-1	436 (500-1)	1340-1¼	436 (500-1¼)
C CIRCLING	1380-1 459 (500-1)	1400-1 479 (500-1)	1480-1½ 559 (600-1½)	1660-2¼ 739 (800-2¼)

