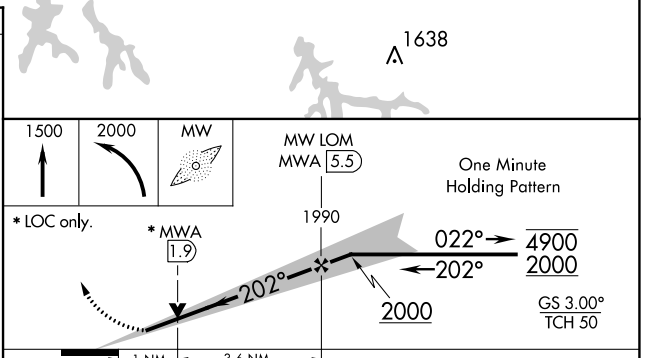
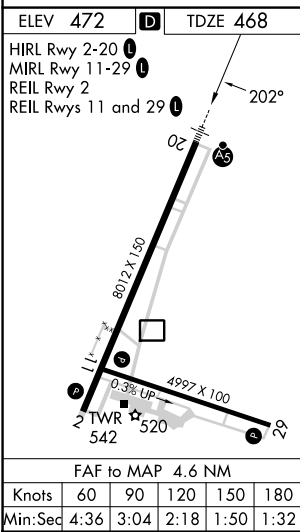
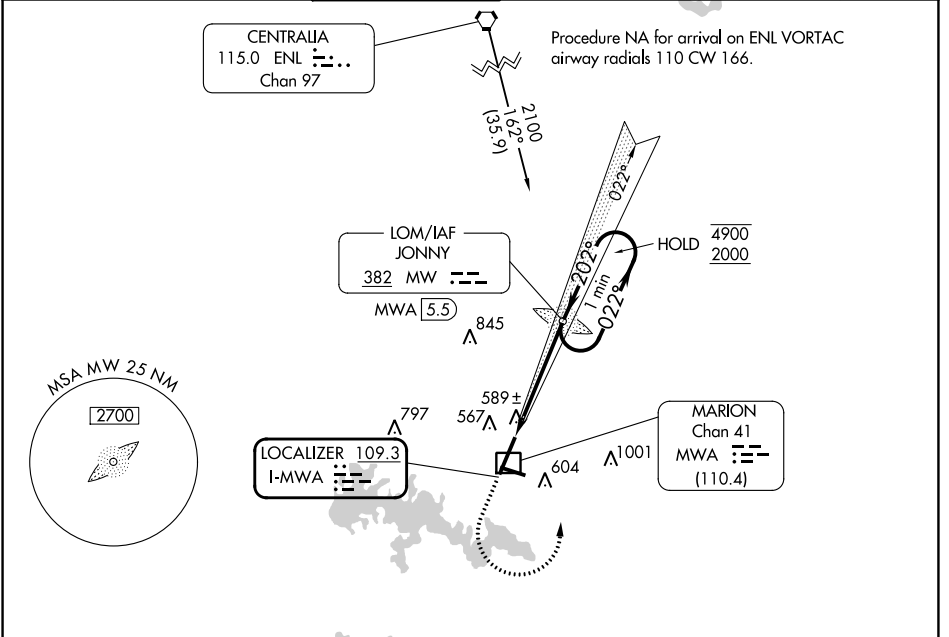


LOC I-MWA 109.3	APP CRS 202°	Rwy Idg 8012 TDZE 468 Apt Elev 472
---------------------------	------------------------	---

ILS or LOC RWY 20

VETERANS AIRPORT OF SOUTHERN ILLINOIS (MWA)

DME required. ADF required.		MALSR	MISSED APPROACH: Climb to 1500 then climbing left turn to 2000 direct JONNY LOM/MWA 5.5 DME and hold.				
<p>▼ Circling Rwy 11 NA at night. For inop ALS, increase S-LOC 20</p> <p>▲ Cat C/D visibilities to 1 SM.</p>		AWOS-3P 119.675	KANSAS CITY CENTER 127.475 346.275	MARION TOWER ★ 128.4 (CTAF) 0	CLNC DEL 127.475 (When twr closed)	GND CON 121.7	UNICOM 122.95



CATEGORY	A	B	C	D
S-ILS 20	668-½		200 (200-½)	
S-LOC 20	840-½	372 (400-½)	840-⅝	372 (400-⅝)
CIRCLING	920-1 448 (500-1)	940-1 468 (500-1)	1040-1½ 568 (600-1½)	1340-2¾ 868 (900-2¾)

EC-3, 26 DEC 2024 to 23 JAN 2025

EC-3, 26 DEC 2024 to 23 JAN 2025