

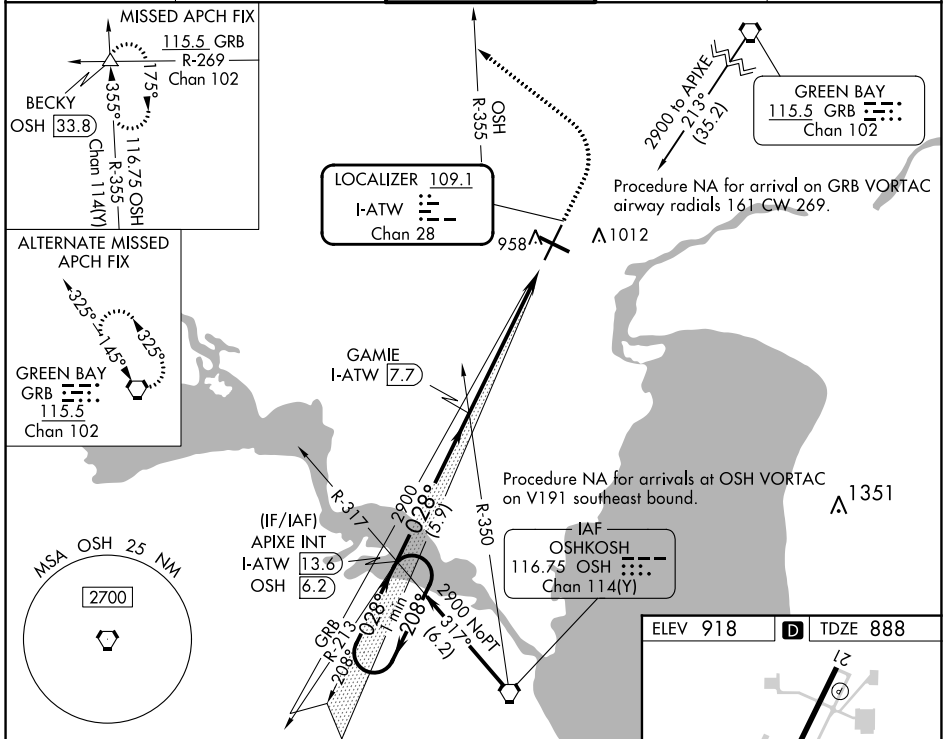
LOC/DME I-ATW 109.1 Chan 28	APP CRS 028°	Rwy Idg 8003 TDZE 888 Apt Elev 918
--	------------------------	---

ILS or LOC RWY 3

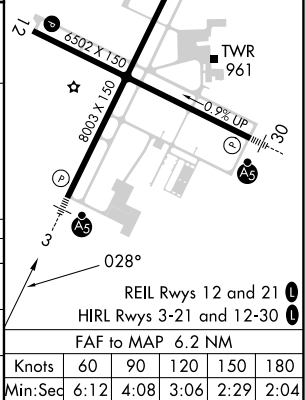
APPLETON INTL (ATW)

<p>▽</p> <p>▲ For inop ALS, increase S-LOC 3 Cats C/D visibility to 1 3/8 SM.</p>	<p>MALSR</p>	<p>MISSED APPROACH: Climb to 2000 then climbing left turn to 3000 on heading 310° and OSH VORTAC R-355 to BECKY INT/ OSH VORTAC 33.8 DME and hold.</p>
---	--------------	--

<p>ATIS 127.15</p>	<p>GREEN BAY APP CON* 126.3 338.2</p>	<p>APPLETON TOWER* 119.6 (CTAF)</p>	<p>GND CON 121.7</p>	<p>UNICOM 122.95</p>
-------------------------------	--	--	---------------------------------	---------------------------------



One Minute Holding Pattern	APIXE INT I-ATW 13.6	GAME INT I-ATW 7.7	2000	3000	OSH R-355	BECKY
2900 ← 208°	028° →	2900	2900	2900	2900	2900
GS 3.00° TCH 47						



CATEGORY	A	B	C	D
S-ILS 3	1088/24		200 (200-1/2)	
S-LOC 3	1380/24	492 (500-1/2)	1380/50	492 (500-1)
C CIRCLING	1380-1	462 (500-1)	1400-1 1/2 482 (500-1 1/2)	1480-2 562 (600-2)

EC-3, 26 DEC 2024 to 23 JAN 2025

EC-3, 26 DEC 2024 to 23 JAN 2025