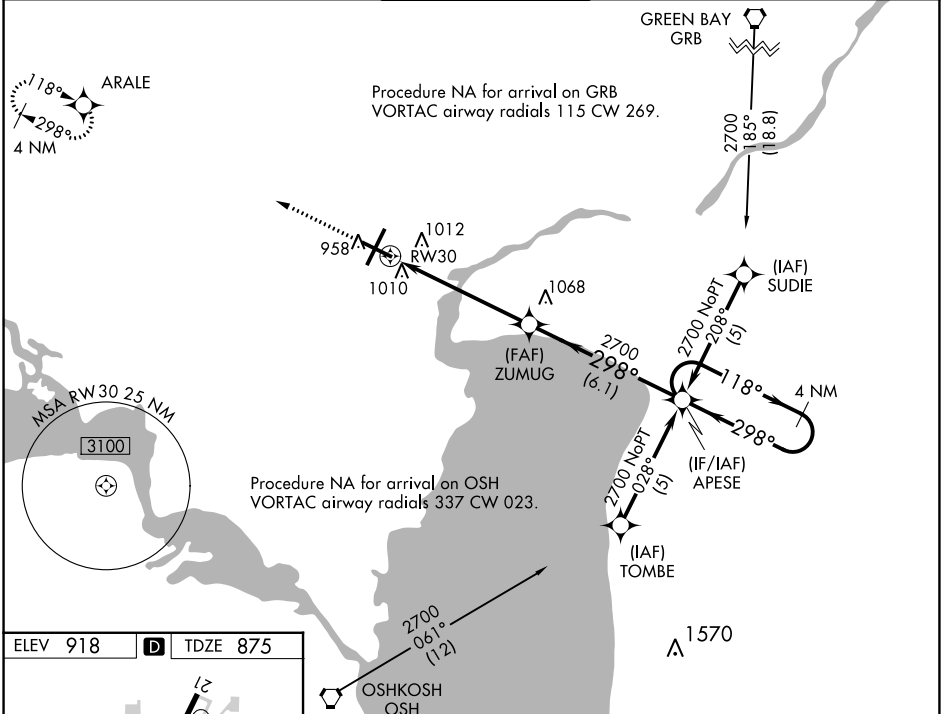


WAAS CH 42517 W30A	APP CRS 298°	Rwy Idg TDZE Apt Elev	6502 875 918
--	------------------------	-----------------------------	---

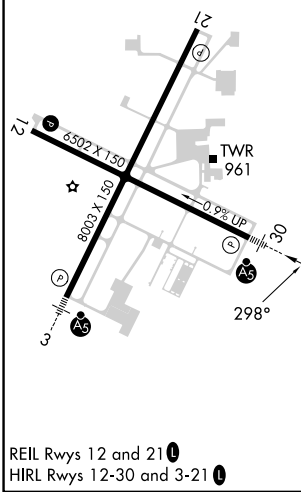
RNAV (GPS) RWY 30

APPLETON INTL (ATW)

RNP APCH.			MALSR	MISSED APPROACH: Climb to 2600 direct ARALE and hold.
For uncompensated Baro-VNAV systems, LNAV/VNAV NA below -16°C (4°F) or above 54°C (130°F).				
ATIS 127.15	GREEN BAY APP CON* 126.3 338.2	APPLETON TOWER* 119.6 (CTAF)	GND CON 121.7	UNICOM 122.95



ELEV 918	D	TDZE 875
----------	----------	----------



CATEGORY	A	B	C	D
LPV DA		1075-1/2	200 (200-1/2)	
LNAV/VNAV DA		1310-1	435 (400-1)	
LNAV MDA	1320-1/2	445 (500-1/2)	1320-7/8 445 (500-7/8)	1320-1 445 (500-1)
C CIRCLING	1340-1 422 (500-1)	1380-1 462 (500-1)	1400-1 1/2 482 (500-1 1/2)	1480-2 562 (600-2)

EC-3, 26 DEC 2024 to 23 JAN 2025

EC-3, 26 DEC 2024 to 23 JAN 2025