

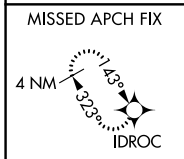
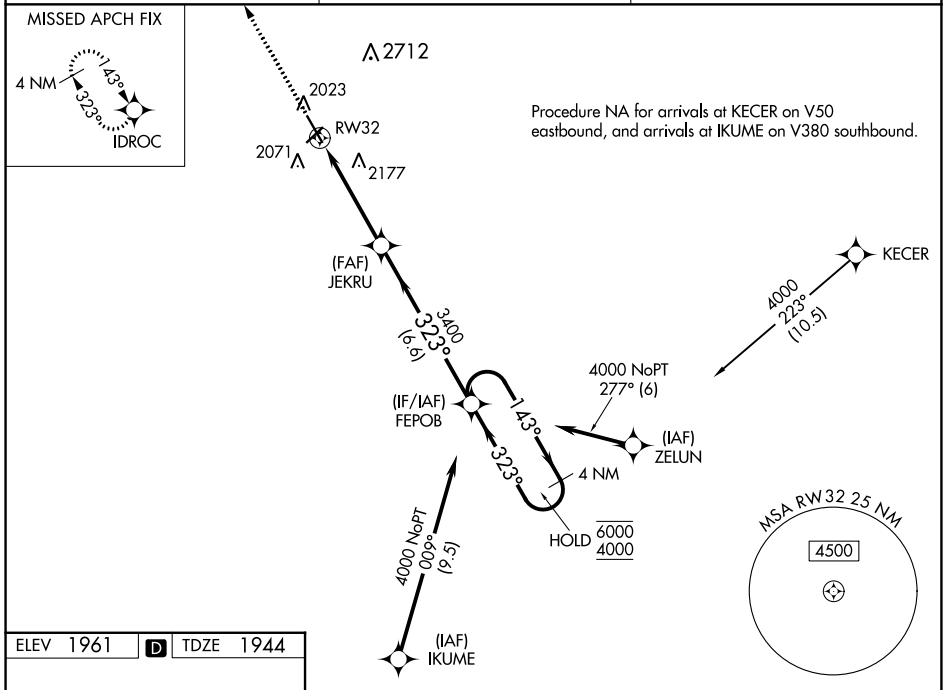
WAAS CH <b>63223</b> W32A	APP CRS <b>323°</b>	Rwy Idg TDZE <b>1944</b> Apt Elev <b>1961</b>
---------------------------------	------------------------	---

# RNAV (GPS) RWY 32

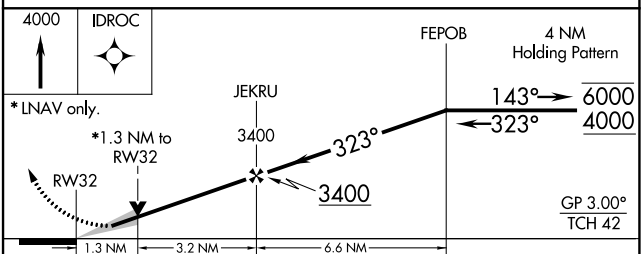
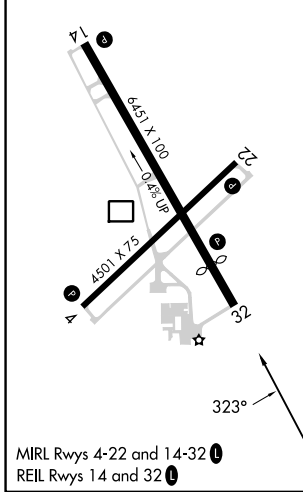
HASTINGS MUNI (HSI)

RNP APCH.	MISSED APPROACH: Climb to 4000 direct IDROC and hold.
<p>⚠ For uncompensated Baro-VNAV systems, LNAV/VNAV NA below -18°C or above 54°C. Circling NA for Cat D east of Rwy 14-32.</p>	

ASOS <b>120.525</b>	MINNEAPOLIS CENTER <b>119.4 278.8</b>	UNICOM <b>122.8 (CTAF) 1</b>
------------------------	--	---------------------------------



ELEV 1961	<b>D</b>	TDZE 1944
-----------	----------	-----------



CATEGORY	A	B	C	D
LPV DA		2194-7/8	250 (300-7/8)	
LNAV/VNAV DA		2386-13/8	442 (500-13/8)	
LNAV MDA	2380-1	436 (500-1)	2380-1 1/4	436 (500-1 1/4)
<b>C</b> CIRCLING	2380-1 419 (500-1)	2540-1 579 (600-1)	2540-1 1/2 579 (600-1 1/2)	2540-2 579 (600-2)

NC-2, 26 DEC 2024 to 23 JAN 2025

NC-2, 26 DEC 2024 to 23 JAN 2025