

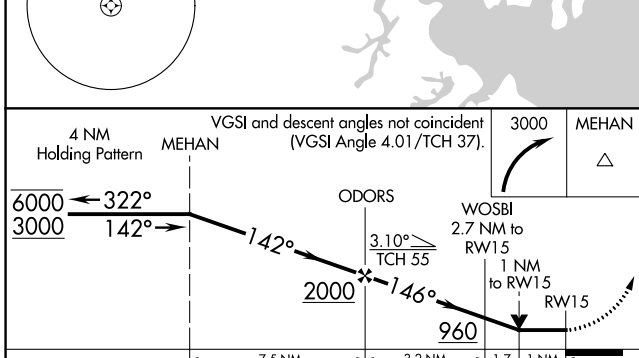
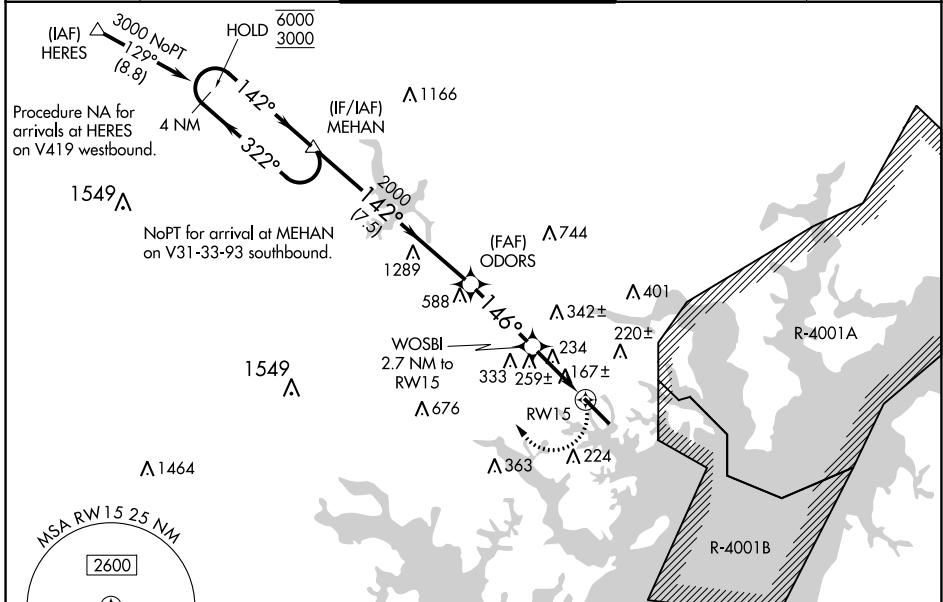
WAAS CH <b>45622</b> <b>W15A</b>	APP CRS <b>146°</b>	Rwy ldg TDZE Apt Elev	<b>6997</b> <b>22</b> <b>22</b>
--	------------------------	-----------------------------	---------------------------------------

# RNAV (GPS) RWY 15

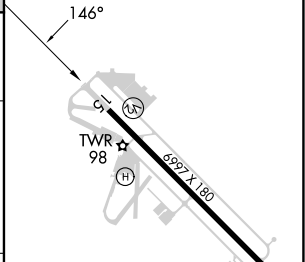
MARTIN STATE (MTN)

RNP APCH.		<p>▼ Rwy 15 helicopter visibility reduction below <math>\frac{3}{4}</math> SM NA. When local altimeter setting not received, use Baltimore/Washington Intl Thurgood Marshall altimeter setting; increase all MDA 60 feet and increase LP Cats C and D visibility <math>\frac{1}{8}</math> SM, LNAV Cats C and D visibility <math>\frac{1}{4}</math> SM and Circling Cat C and D visibility <math>\frac{1}{4}</math> SM. Circling Cat D NA northeast of Rwy 15-33.</p>		<p>⚠ MISSED APPROACH: Climbing right turn to 3000 direct MEHAN and hold.</p>	
-----------	--	---	--	--	--

ATIS <b>124.925</b>	POTOMAC APP CON <b>119.0 282.275</b>	MARTIN TOWER * <b>121.3(CTAF) 0 254.425</b>	GND CON <b>121.8 253.4</b>	UNICOM <b>122.95</b>
------------------------	---	--	-------------------------------	-------------------------



ELEV <b>22</b>	TDZE <b>22</b>
HIRL Rwy 15-33	
REIL Rwys 15 and 33	



CATEGORY	A	B	C	D
LP MDA	500-1	478 (500-1)	500- $\frac{1}{8}$	478 (500- $\frac{1}{8}$ )
LNAV MDA	520-1	498 (500-1)	520- $\frac{1}{8}$	498 (500- $\frac{1}{8}$ )
CIRCLING	560-1	538 (600-1)	680- $\frac{1}{4}$ 658 (700- $\frac{1}{4}$ )	740- $\frac{1}{4}$ 718 (800- $\frac{1}{4}$ )

Rwy 33 ldg 8100'  
(Military Operations Only)  
Rwy 15 take-off 8100'  
(Military Operations Only)

NE-3, 26 DEC 2024 to 23 JAN 2025

NE-3, 26 DEC 2024 to 23 JAN 2025