

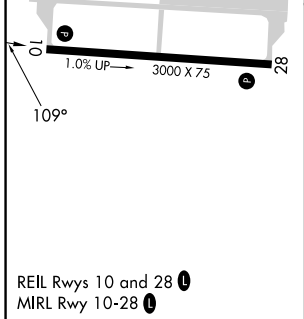
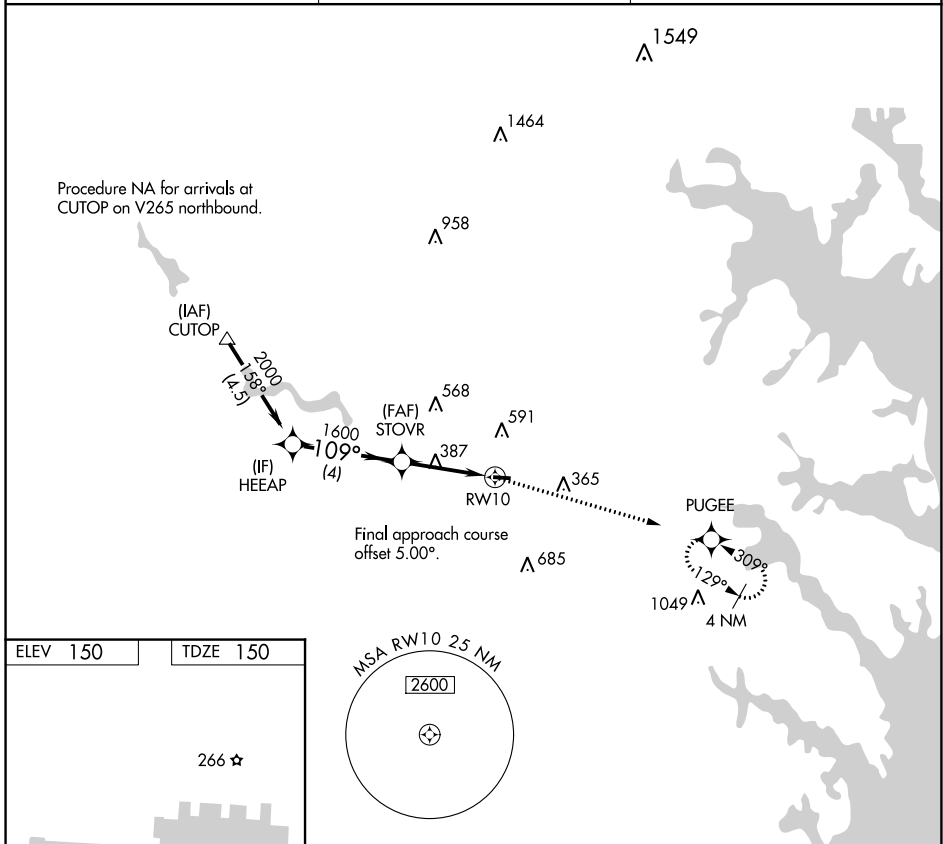
APP CRS	Rwy Idg	3000
109°	TDZE	150
	Apt Elev	150

RNAV (GPS) RWY 10

TIPTON (FME)

RNP APCH - GPS.		MISSED APPROACH: Climb to 2100 direct PUGEE and hold.
	Rwy 10 helicopter visibility reduction below 1 SM NA.	
	Straight-in Rwy 10 NA at night, Circling Rwy 10 NA at night.	

AWOS-3 123.925	POTOMAC APP CON 119.7 290.475	UNICOM 123.05 (CTAF) 0
--------------------------	---	----------------------------------



2100	PUGEE			
VGSIs and descent angles not coincident (VGSi Angle 4.00/51).				
CATEGORY	A	B	C	D
LNAV MDA	780-1	630 (700-1)	NA	
CIRCLING	820-1 670 (700-1)	960-1 810 (900-1)	NA	

NE-3, 26 DEC 2024 to 23 JAN 2025

NE-3, 26 DEC 2024 to 23 JAN 2025