

WAAS CH 56347 W28A	APP CRS 284°	Rwy Idg 3000 TDZE 150 Apt Elev 150
--	------------------------	---

RNAV (GPS) RWY 28

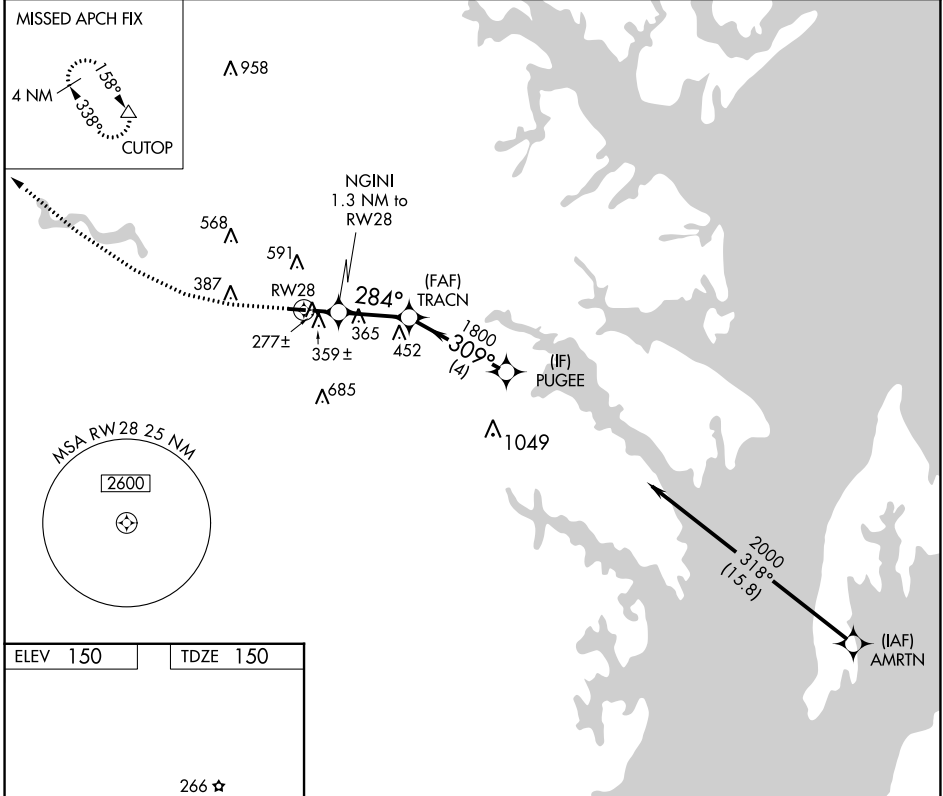
TIPTON (FME)

RNP APCH - GPS.

▼ Rwy 28 helicopter visibility reduction below 3/4 SM NA. Circling Rwy 10 NA at night.

▲ MISSED APPROACH: Climb to 570 then climbing right turn to 2000 direct CUTOP and hold.

AWOS-3 123.925	POTOMAC APP CON 119.7 290.475	UNICOM 123.05 (CTAF) ①
--------------------------	---	----------------------------------



ELEV 150 | TDZE 150

266 ☆

REIL Rwy 10 and 28 ①
MIRL Rwy 10-28 ①

570 | 2000 | CUTOP ▲

VGSI and descent angles not coincident (VGSI Angle 4.00/TCH 57).

NGINI 1.3 NM to RW28

TRACN | PUGEE

RW28 | 720 | 284° | 1800 | 309° | 2000

1.3 NM | 2.5 NM | 4 NM

CATEGORY	A	B	C	D
LP MDA	540-1	390 (400-1)	NA	
LNAV MDA	620-1	470 (500-1)	NA	
CIRCLING	820-1 670 (700-1)	960-1 810 (900-1)	NA	

NE-3, 26 DEC 2024 to 23 JAN 2025

NE-3, 26 DEC 2024 to 23 JAN 2025