

CAMP RIPLEY, MINNESOTA

# ILS or LOC RWY 31

LOC I-RYM <b>111.1</b> Chan <b>48</b>	APCH CRS <b>312°</b>	Rwy Idg TDZE <b>1146</b> Arprt Elev <b>1150</b>
---	-------------------------	---

[USA]

RAY S. MILLER AAF (KRYM)

ADF, DME required. RADAR required for entry at STC VOR/DME.

- ▼ \* When ALS inop, increase CAT CD vis to 1¼ miles.
- ▲ \*\* When ALS inop, increase CAT CD vis to 1¾ miles.

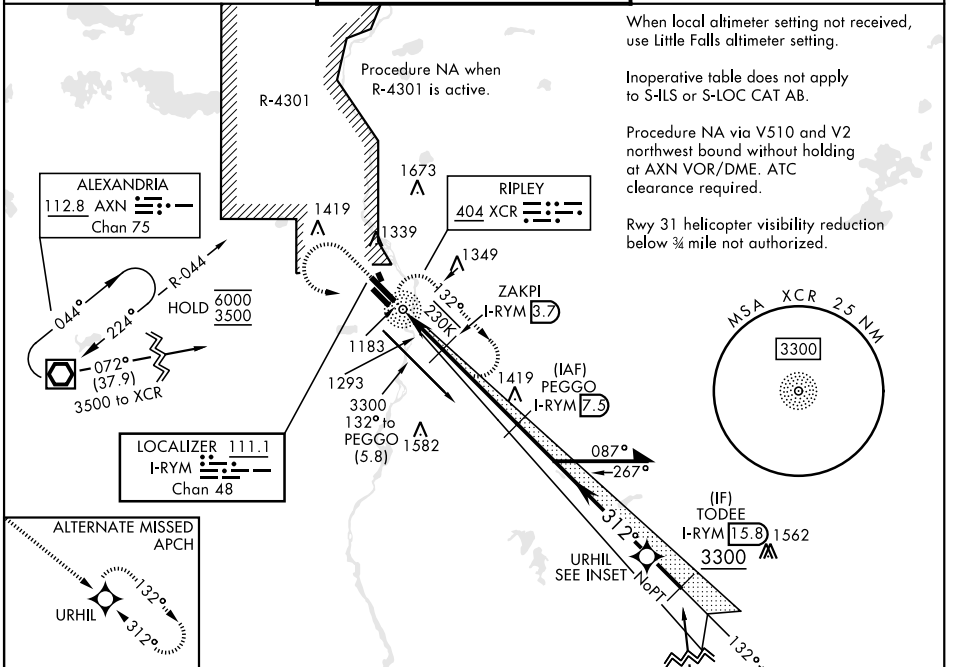


MISSED APPROACH: Climb to 2000, then climbing left turn to 3500 direct XCR NDB and hold. Continue climb in hold to 3500.

MINNEAPOLIS CENTER  
**118.05 239.0**

MILLER TOWER ★  
**126.2 0 254.4**

CLNC DEL  
**126.2**



When local altimeter setting not received, use Little Falls altimeter setting.

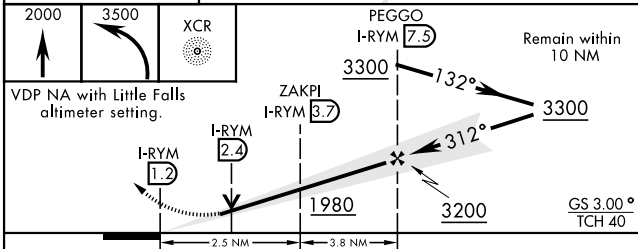
Inoperative table does not apply to S-ILS or S-LOC CAT AB.

Procedure NA via V510 and V2 northwest bound without holding at AXN VOR/DME. ATC clearance required.

Rwy 31 helicopter visibility reduction below ¾ mile not authorized.

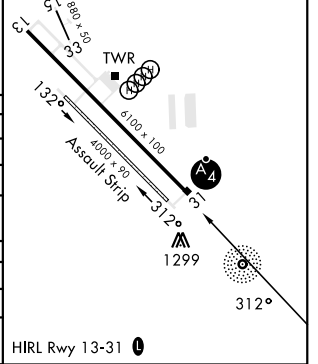
NC-1, 26 DEC 2024 to 23 JAN 2025

NC-1, 26 DEC 2024 to 23 JAN 2025



CATEGORY	A	B	C	D
S-ILS 31		1396-1	250 (300-1)	
S-LOC 31*		1580-1	434 (500-1)	
CIRCLING	1640-1	1660-1	1720-1½	2080-3
	490 (500-1)	510 (600-1)	570 (600-1½)	930 (1000-3)
LITTLE FALLS ALTIMETER SETTING MINIMUMS				
S-ILS 31		1420-1	274 (300-1)	
S-LOC 31**	1620-1	474 (500-1)	1620-1½	474 (500-1½)
CIRCLING	1680-1	1700-1	1760-1¾	2120-3
	530 (600-1)	550 (600-1)	610 (700-1¾)	970 (1000-3)

ELEV 1150	TDZE 1146
-----------	-----------



CAMP RIPLEY, MINNESOTA  
Amdt 7 05OCT23

46°05'N-94°22'W

RAY S. MILLER AAF (KRYM)

# ILS or LOC RWY 31