

RNAV (GPS) RWY 13

APCH CRS **132°** Rwy ldg **6100**
 TDZE **1150**
 Arprt Elev **1150**

[USA]

RAY S. MILLER AAF (KRYM)

RNP APCH-GPS

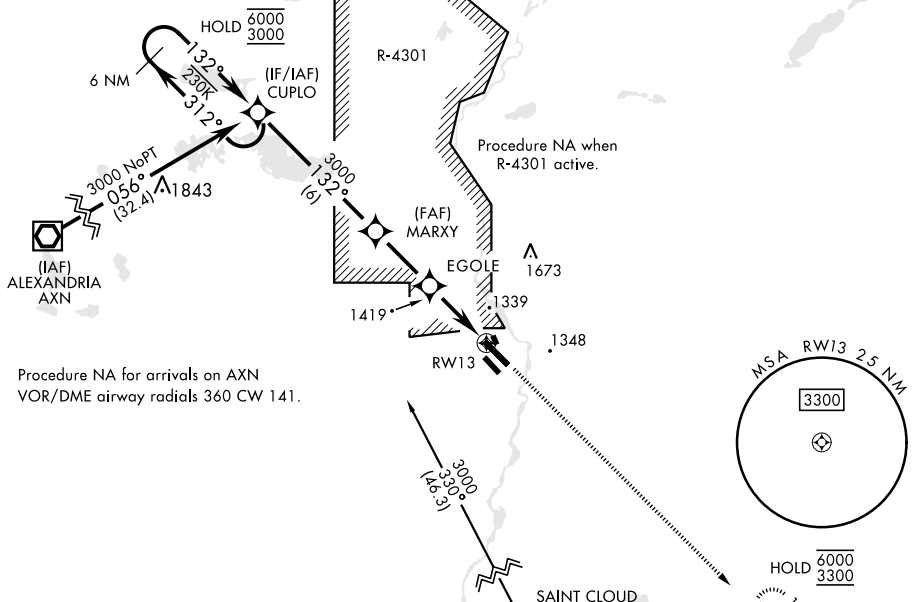
RADAR required for procedure entry at STC VOR/DME.

MISSED APPROACH: Climb to 3300 direct URHIL and hold.

MINNEAPOLIS CENTER
118.05 239.0

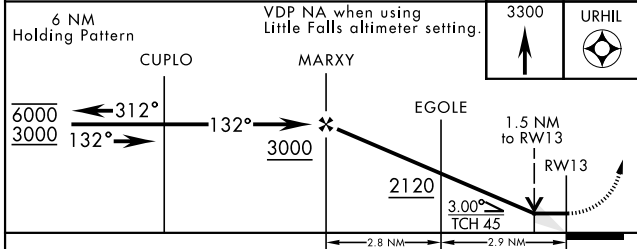
MILLER TOWER ★
126.2 254.4

CLNC DEL
126.2



NC-1, 26 DEC 2024 to 23 JAN 2025

NC-1, 26 DEC 2024 to 23 JAN 2025



ELEV 1150 TDZE 1150

| CATEGORY | A | B | C | D |
|--------------------------------|--------------------|----------------------|----------------------|---------------------|
| RNAV MDA | 1680-1 530 (600-1) | 1680-1½ 530 (600-1½) | 1720-1½ 570 (600-1½) | 2080-3 930 (1000-3) |
| LITTLE FALLS ALTIMETER SETTING | | | | |
| RNAV MDA | 1720-1 570 (600-1) | 1720-1½ 570 (600-1½) | 1760-1¾ 610 (700-1¾) | 2120-3 970 (1000-3) |
| CIRCLING | 1720-1 570 (600-1) | 1720-1½ 570 (600-1½) | 1760-1¾ 610 (700-1¾) | 2120-3 970 (1000-3) |

RNAV (GPS) RWY 13