

# RNAV (GPS) RWY 31

APCH CRS <b>312°</b>	Rwy Idg <b>6100</b>
	THRE <b>1146</b>
	Arprt Elev <b>1150</b>

[USA]

RAY S. MILLER AAF (KRYM)

**▼** \* When ALS inop, increase CAT D vis to 1 ¼ miles.

**MALSF**

**MISSED APPROACH:** Climb to 3000 direct CUPLO and hold.

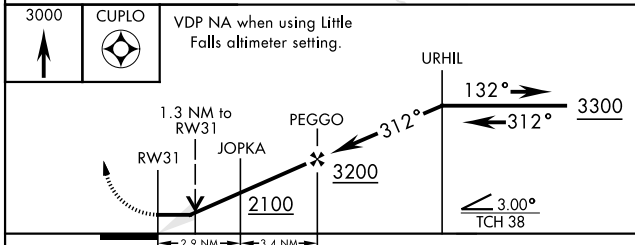
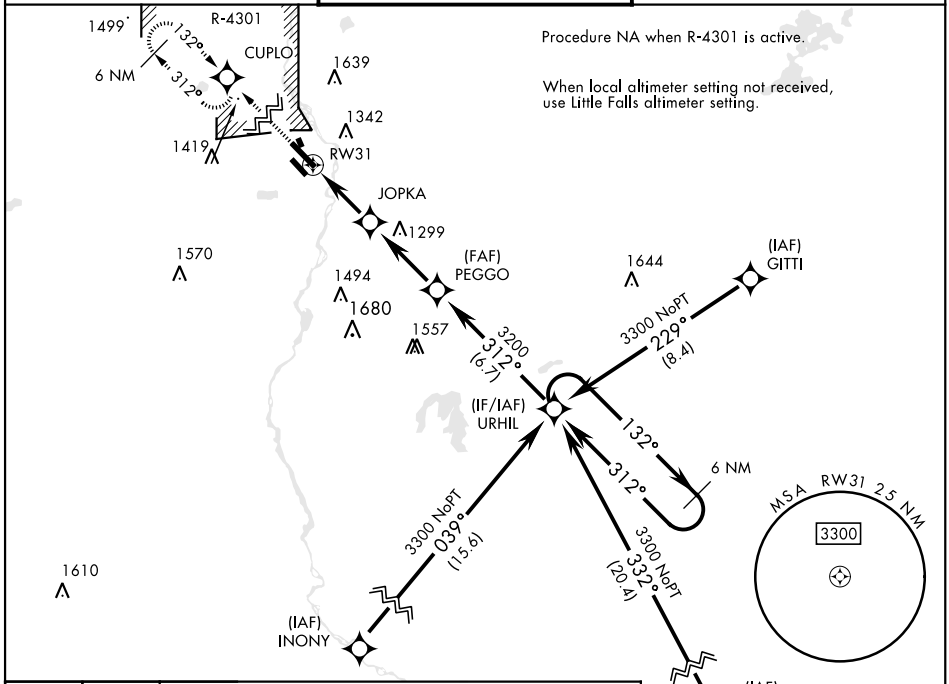
**▲ NA** DME/DME RNP-0.3 NA.



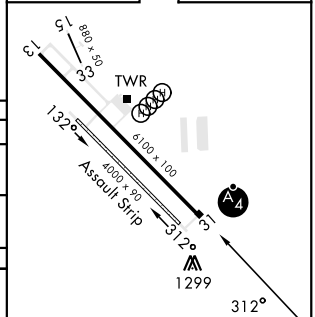
MINNEAPOLIS CENTER  
**118.05 239.0**

MILLER TOWER ★  
**126.2 0 254.4**

CLNC DEL  
**126.2**



ELEV	1150	THRE	1146
------	------	------	------



CATEGORY	A	B	C	D
RNAV MDA *	1580-¾ 434 (500-¾)	1580-1 434 (500-1)		
<b>C</b> CIRCLING	1640-1 490 (500-1)	1660-1 510 (600-1)	1720-1½ 570 (600-1½)	2080-3 930 (1000-3)
LITTLE FALLS ALTIMETER SETTING				
RNAV MDA *	1620-¾ 474 (500-¾)	1620-1½ 474 (500-1½)		
<b>C</b> CIRCLING	1680-1 530 (600-1)	1760-1¾ 610 (700-1¾)	2120-3 970 (1000-3)	

# RNAV (GPS) RWY 31

NC-1, 26 DEC 2024 to 23 JAN 2025

NC-1, 26 DEC 2024 to 23 JAN 2025