

WAAS CH 53408 W18A	APP CRS 181°	Rwy Idg 4016 TDZE 16 Apt Elev 16
----------------------------------------	------------------------	-------------------------------------------------------------

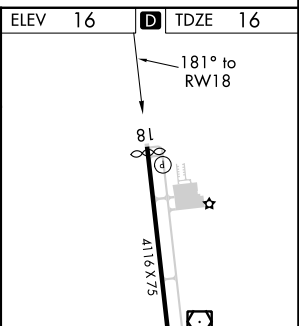
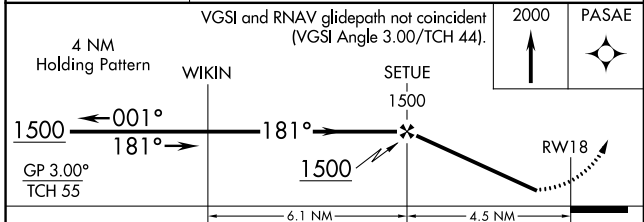
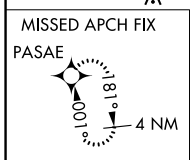
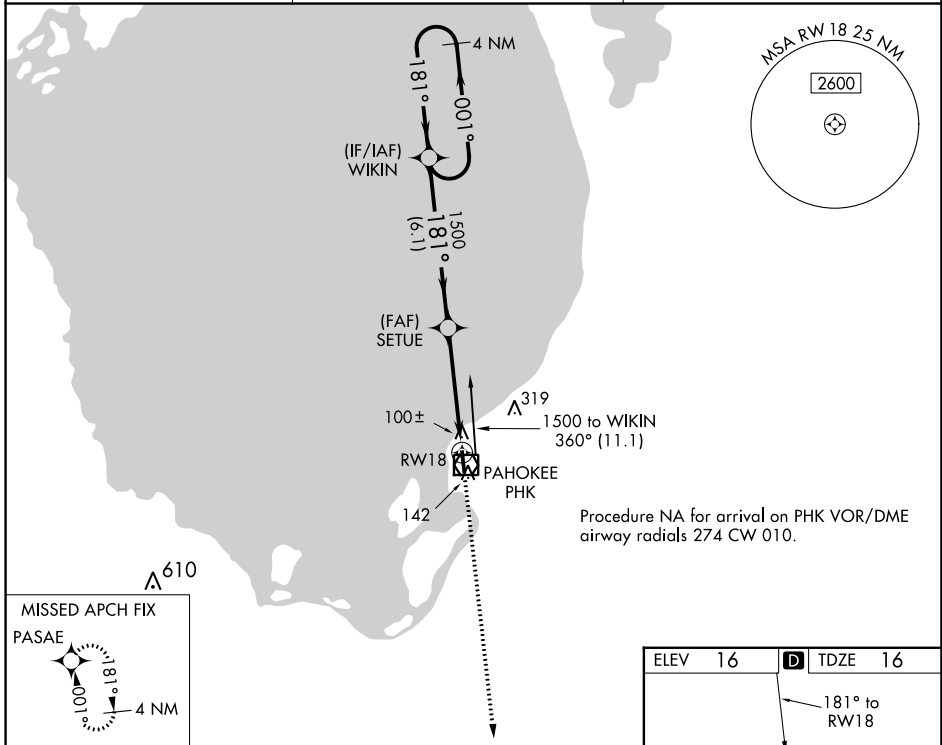
RNAV (GPS) RWY 18

PALM BEACH COUNTY GLADES (PHK)

⚠ Baro-VNAV NA. Rwy 18 helicopter visibility reduction below 3/4 SM NA.
⚠ DME/DME RNP-0.3 NA. Use Palm Beach Intl altimeter setting, when not received procedure NA.

MISSED APPROACH: Climb to 2000 direct PASAE and hold.

PBI ASOS 123.75	PALM BEACH APP CON 125.2 317.4	UNICOM 122.8 (CTAF) 0
---------------------------	------------------------------------------	---------------------------------



CATEGORY	A	B	C	D
LPV DA	358-1 1/8		342 (400-1 1/8)	
LNAV/VNAV DA	342-1		326 (400-1)	
LNAV MDA	440-1 424 (500-1)		440-1 1/4 424 (500-1 1/4)	
C CIRCLING	580-1 564 (600-1)		760-2 1/4 744 (800-2 1/4)	

REIL Rwy 18 and 36
 MIRL Rwy 18-36 **0**

SE-3, 26 DEC 2024 to 23 JAN 2025

SE-3, 26 DEC 2024 to 23 JAN 2025