

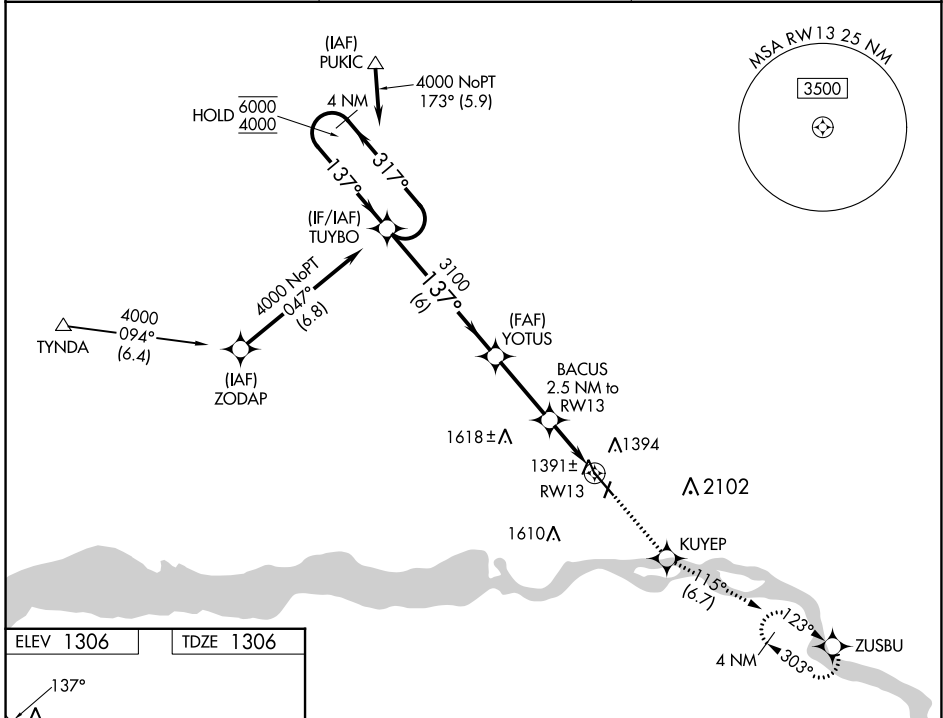
WAAS CH 50400 W13A	APP CRS 137°	Rwy Idg TDZE 1306 Apt Elev 1306	6094
--	------------------------	---	-------------

RNAV (GPS) RWY 13

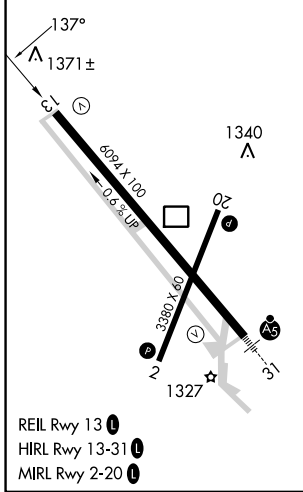
CHAN GURNEY MUNI (YKN)

RNP APCH - GPS.	MISSED APPROACH: Climb to 4000 direct KUYEP and on track 115° to ZUSBU and hold, continue climb-in-hold to 4000.
<p>⚠ Circling NA east of Rwy 20 and northeast of Rwy 31. ⚠ Rwy 13 helicopter visibility reduction below 3/4 SM NA.</p>	

AWOS-3PT 119.05	MINNEAPOLIS CENTER 125.025 235.625	UNICOM 122.8 (CTAF) 0
---------------------------	--	---------------------------------



ELEV 1306	TDZE 1306
-----------	-----------



VGSI and RNAV glidepath not coincident (VGSI Angle 3.00/TCH 41).				
4000	KUYEP	ZUSBU		
↑	✧	tr 115°		
4 NM Holding Pattern	TUYBO	YOTUS		
6000 ← 317°	3100	BACUS 2.5 NM to RW13		
4000 → 137°	3100	1 NM to RW13		
GP 3.00°		2140		
TCH 45				
	6 NM	3 NM	1.5 NM	1 NM
CATEGORY	A	B	C	D
LPV DA	1556-3/4 250 (300-3/4)			
LNAV MDA	1660-1 354 (400-1)			
☑ CIRCLING	1760-1 454 (500-1)	1780-1 474 (500-1)	1980-2 674 (700-2)	1980-2 1/4 674 (700-2 1/4)

NC-1, 26 DEC 2024 to 23 JAN 2025

NC-1, 26 DEC 2024 to 23 JAN 2025