

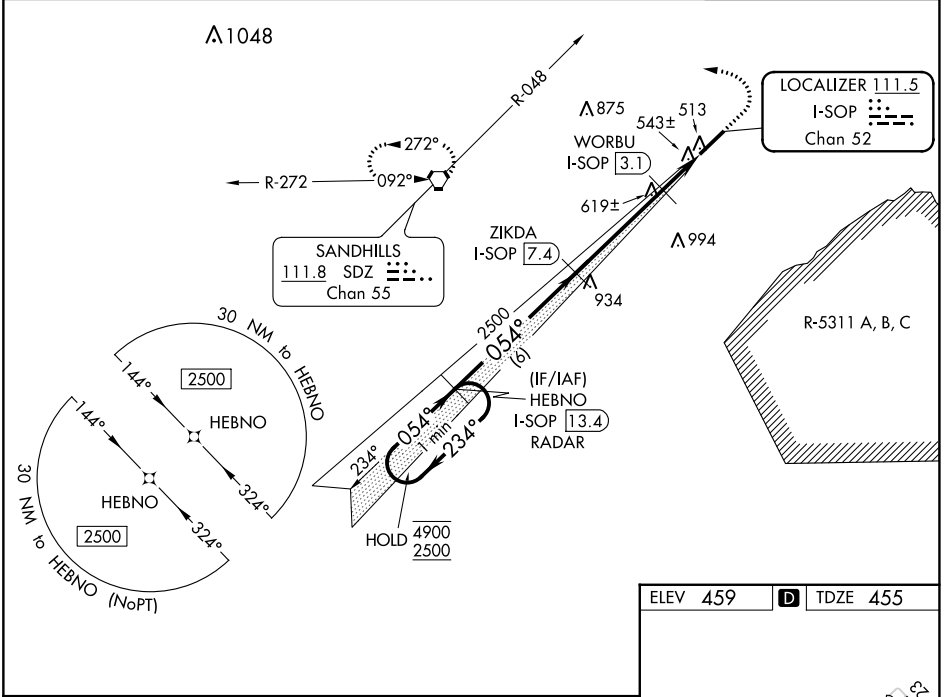
LOC/DME I-SOP	APP CRS	Rwy Idg	5502
111.5	054°	TDZE	455
Chan 52		Apt Elev	459

ILS Y or LOC Y RWY 5

MOORE COUNTY(SOP)

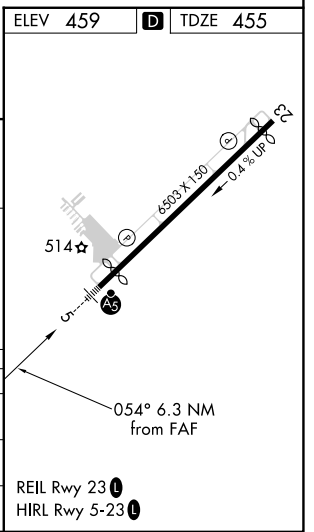
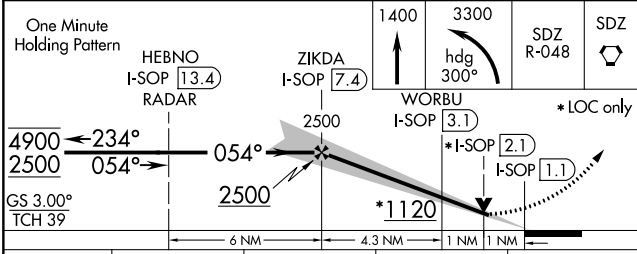
DME required. RNAV-1 GPS or RADAR required.		MALSR	MISSED APPROACH: Climb to 1400 then climbing left turn to 3300 on heading 300° and on SDZ VORTAC R-048 to SDZ VORTAC and hold.

AWOS-3PT 127.575	FAYETTEVILLE APP CON 127.8 343.725	CLNC DEL 127.0	UNICOM 123.05(CTAF)
----------------------------	--	--------------------------	-------------------------------



SE-2, 26 DEC 2024 to 23 JAN 2025

SE-2, 26 DEC 2024 to 23 JAN 2025



CATEGORY	A	B	C	D
S-ILS 5	655-½		200 (200-½)	
S-LOC 5	800-½	345 (400-½)	800-⅝	345 (400-⅝)
C CIRCLING	880-1 421 (500-1)	920-1 461 (500-1)	1100-1¼ 641 (700-1¼)	1360-3 901 (1000-3)

REIL Rwy 23
HIRL Rwy 5-23