

LOC/DME I-SOP 111.5 Chan 52	APP CRS 054°	Rwy Idg TDZE Apt Elev	5502 455 459
---	------------------------	-----------------------------	---

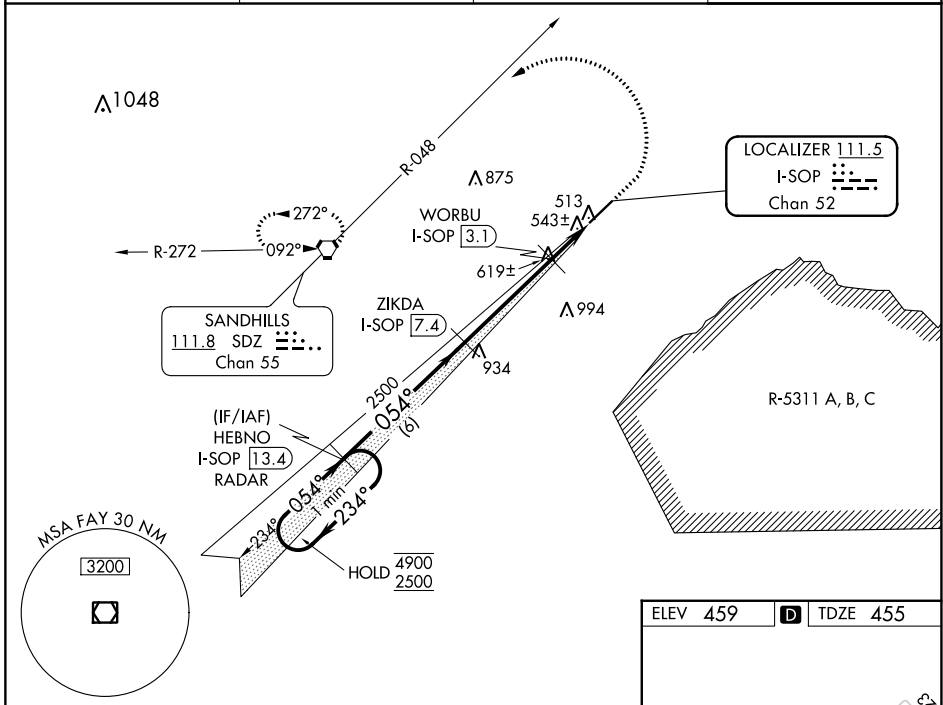
ILS Z or LOC Z RWY 5

MOORE COUNTY(SOP)

DME required.
RADAR required for procedure entry.

MALSR
MISSED APPROACH: Climb to 1400 then climbing left turn to 3300 on heading 300° and on SDZ VORTAC R-048 to SDZ VORTAC and hold.

AWOS-3PT 127.575	FAYETTEVILLE APP CON 127.8 343.725	CLNC DEL 127.0	UNICOM 123.05 (CTAF) 0
----------------------------	--	--------------------------	---



SE-2, 26 DEC 2024 to 23 JAN 2025

SE-2, 26 DEC 2024 to 23 JAN 2025

