

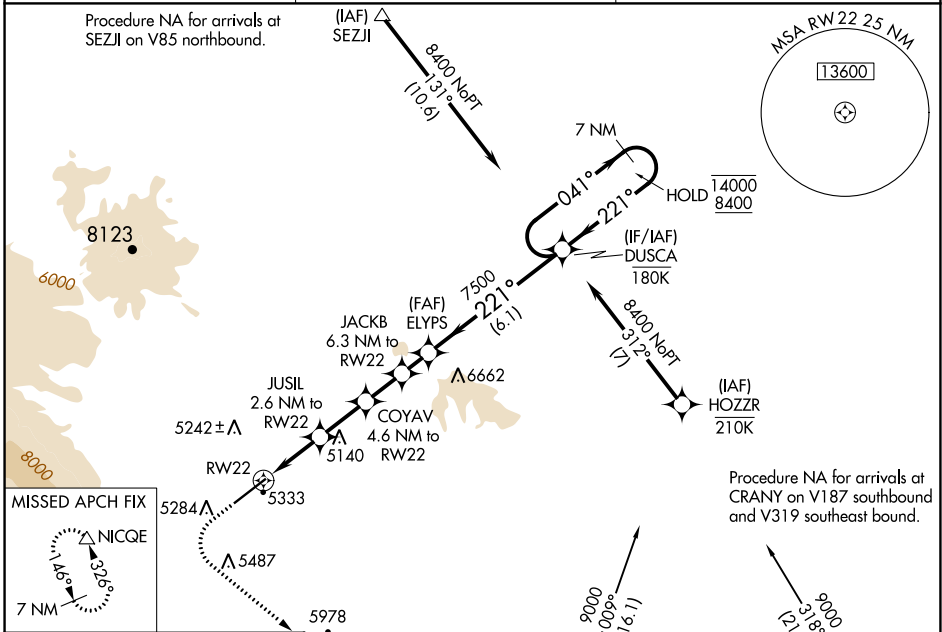
WAAS CH 90543 W22A	APP CRS 221°	Rwy Idg TDZE Apt Elev	7178 5076 5102
---------------------------------	------------------------	-----------------------------	---

RNAV (GPS) RWY 22

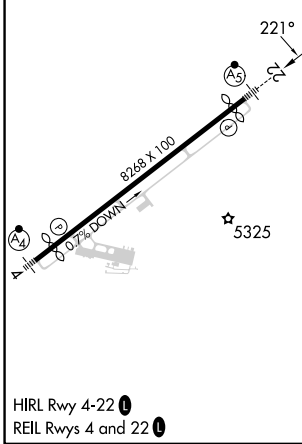
YELLOWSTONE RGNL (COD)

RNP APCH.	MALSR	MISSED APPROACH: (Do not exceed 185K until NICQE) Climb to 5740 then climbing left turn to 9600 direct NICQE and hold, continue climb-in-hold to 9600.
-10°C		

AWOS-3PT 135.075	SALT LAKE CENTER 127.75 351.9	UNICOM 122.8 (CTAF) 0
----------------------------	---	---------------------------------



ELEV 5102	D	TDZE 5076
-----------	----------	-----------



Procedure NA for arrivals at CRANY on V187 southbound and V319 southeast bound.	<table border="1"> <tr> <td>5740</td> <td>9600</td> <td>NICQE</td> <td colspan="2"></td> </tr> <tr> <td colspan="2">* LNAV only</td> <td>JUSIL 2.6 NM to RW22</td> <td>COYAV 4.6 NM to RW22</td> <td>JACKB 6.3 NM to RW22</td> </tr> <tr> <td colspan="2">* 1.4 NM to RW22</td> <td>5940*</td> <td>6580*</td> <td>7120*</td> </tr> <tr> <td>1.4</td> <td>1.2</td> <td>2.1 NM</td> <td>1.6 NM</td> <td>1.2 NM</td> </tr> </table>				5740	9600	NICQE			* LNAV only		JUSIL 2.6 NM to RW22	COYAV 4.6 NM to RW22	JACKB 6.3 NM to RW22	* 1.4 NM to RW22		5940*	6580*	7120*	1.4	1.2	2.1 NM	1.6 NM	1.2 NM
5740	9600	NICQE																						
* LNAV only		JUSIL 2.6 NM to RW22	COYAV 4.6 NM to RW22	JACKB 6.3 NM to RW22																				
* 1.4 NM to RW22		5940*	6580*	7120*																				
1.4	1.2	2.1 NM	1.6 NM	1.2 NM																				
	<table border="1"> <tr> <td colspan="2"></td> <td>ELYPS 7500</td> <td>DUSCA 7 NM Holding Pattern</td> <td></td> </tr> <tr> <td colspan="2"></td> <td>041° → 14000</td> <td>← 221° 8400</td> <td></td> </tr> <tr> <td colspan="2"></td> <td>GP 3.00°</td> <td>TCH 53</td> <td></td> </tr> </table>						ELYPS 7500	DUSCA 7 NM Holding Pattern				041° → 14000	← 221° 8400				GP 3.00°	TCH 53						
		ELYPS 7500	DUSCA 7 NM Holding Pattern																					
		041° → 14000	← 221° 8400																					
		GP 3.00°	TCH 53																					

CATEGORY	A		B		C		D
LPV DA	5399-1				323 (300-1)		
LNAV MDA	5600-1		524 (500-1)		5600-1½		524 (500-1½)
C CIRCLING	5780-1 678 (700-1)		5900-1 798 (800-1)		5940-2½ 838 (900-2½)		7000-3 1898 (1900-3)

NW-1, 26 DEC 2024 to 23 JAN 2025

NW-1, 26 DEC 2024 to 23 JAN 2025