

NE-3, 26 DEC 2024 to 23 JAN 2025

**TOP ALTITUDE:**  
**3000**



TAKEOFF MINIMUMS

Rwy 14: Standard.  
Rwy 32: Standard with minimum climb  
of 240' per NM to 1900.

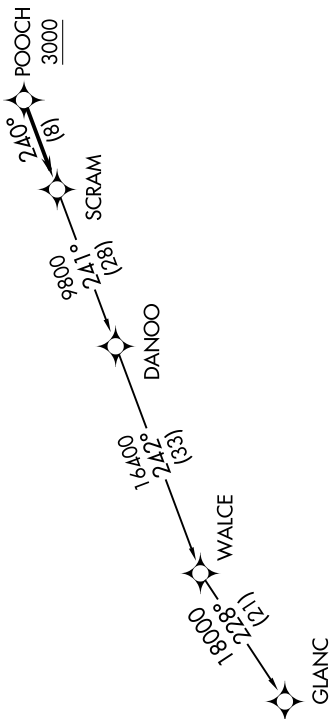
NOTE: RNAV 1.  
NOTE: RADAR required.  
NOTE: DME/DME/IRU or GPS required.  
NOTE: Turbo-jets only.  
NOTE: Takeoff Rwy 32 requires a climb to 2500 on  
heading 34.1° before proceeding on the ATC  
assigned heading for obstacle avoidance.

NOTE: Chart not to scale.

**▼** DEPARTURE ROUTE DESCRIPTION

Climb on heading assigned by ATC, expect RADAR vectors to POOCH,  
then on track 240° to SCRAM, thence . . . .  
. . . . as depicted. Maintain 3000, expect clearance to filed  
altitude within ten (10) minutes after departure.

GLANC TRANSITION (SCRAM6.GLANC):



POTOMAC DEP CON  
120.45 306.925  
AWOS-3  
124.85  
CLNC DEL  
126.15  
UNICOM  
122.975 (CTAF)

NE-3, 26 DEC 2024 to 23 JAN 2025