

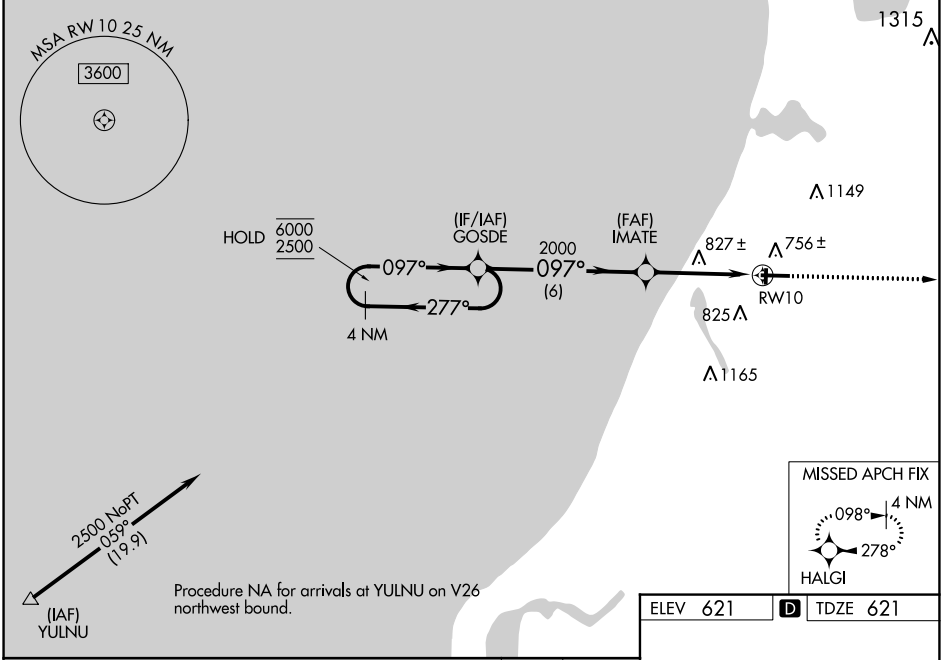
WAAS CH <b>60933</b> <b>W10A</b>	APP CRS <b>097°</b>	Rwy Idg <b>5501</b> TDZE <b>621</b> Apt Elev <b>621</b>
--	------------------------	---

# RNAV (GPS) RWY 10

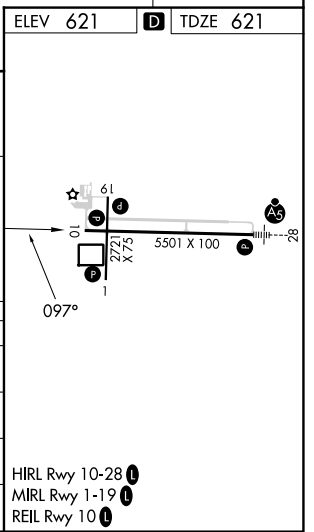
MANISTEE COUNTY/BLACKER (MBL)

RNP APCH - GPS.		MISSED APPROACH: Climb to 3000 direct HALGI and hold.
<p><b>⚠</b> Circling Rwy 1, 19 NA at night. Rwy 10 helicopter visibility reduction below 3/4 SM NA. For uncompensated Baro-VNAV systems, LNAV/VNAV NA below -16°C or above 54°C.</p>		

AWOS-3PT <b>118.825</b>	MINNEAPOLIS CENTER <b>120.85 322.35</b>	UNICOM <b>122.8</b> (CTAF) <b>ⓘ</b>
----------------------------	--	--



4 NM Holding Pattern		VGSI and RNAV glidepath not coincident (VGSI Angle 3.00/TCH 30).		3000	HALGI
GOSDE		IMATE			
6000	←277°	097°		2000	
2500	←097°	097°		1.4 NM to RW10	
GP 3.00°		2000		RW10	
TCH 53		6 NM		2.8 NM	1.4 NM
CATEGORY	A	B	C	D	
LPV DA	890-7/8		269 (300-7/8)		
LNAV/VNAV DA	1091-13/8		470 (500-13/8)		
LNAV MDA	1080-1	459 (500-1)		1080-13/8	459 (500-13/8)
CIRCLING	1160-1 539 (600-1)	1220-1 599 (600-1)	1400-21/4 779 (800-21/4)	1500-23/4 879 (900-23/4)	



EC-1, 26 DEC 2024 to 23 JAN 2025

EC-1, 26 DEC 2024 to 23 JAN 2025