

WAAS CH <b>56505</b> <b>W01A</b>	APP CRS <b>004°</b>	Rwy Idg TDZE Apt Elev	<b>6501</b> <b>760</b> <b>772</b>
--	------------------------	-----------------------------	---

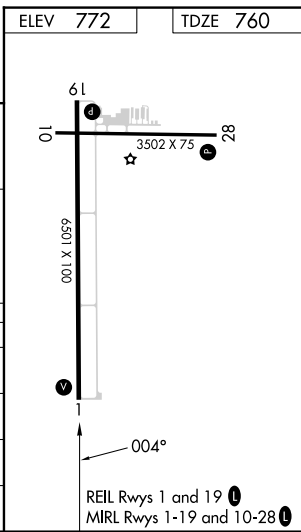
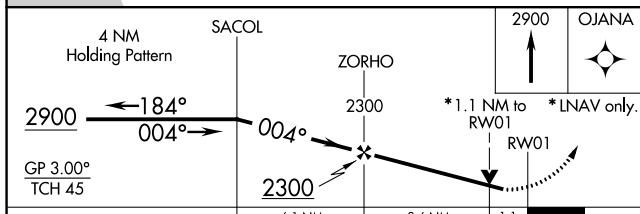
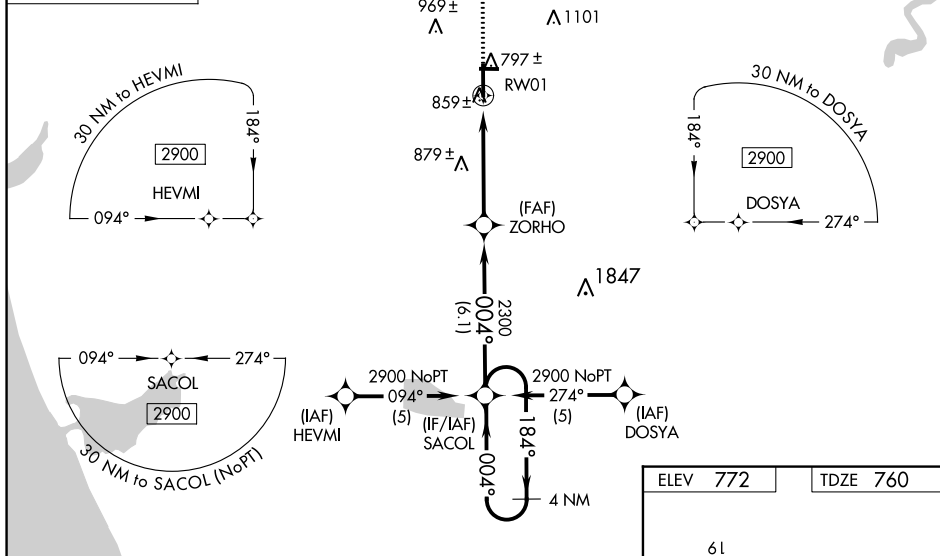
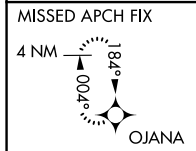
# RNAV (GPS) RWY 1

FREMONT MUNI (F'FX)

**∇** Baro-VNAV NA when using Muskegon altimeter setting. For uncompensated Baro-VNAV systems, LNAV/VNAV NA below -16°C (4°F) or above 47°C (116°F). Rwy 1 helicopter visibility reduction below ¾ SM NA. DME/DME RNP-0.3 NA. When local altimeter setting not received, use Muskegon altimeter setting and increase all DA 65 feet, and all visibilities ¼ mile. Increase all MDA 80 feet, and Cat C/D visibilities ¼ mile. VDP NA when using Muskegon altimeter setting.

**MISSED APPROACH:**  
Climb to 2900 direct OJANA and hold.

AWOS-3 <b>118.775</b>	GREAT LAKES APP CON * <b>119.8 290.35</b>	CLNC DEL <b>118.25</b>	UNICOM <b>123.0 (CTAF) 0</b>
--------------------------	--	---------------------------	---------------------------------



CATEGORY	A	B	C	D
LPV DA	1036-1 276 (300-1)			
LNAV/VNAV DA	1129-1¼ 369 (400-1¼)			
LNAV MDA	1140-1	380 (400-1)	1140-1¼ 380 (400-1¼)	
CIRCLING	1260-1	488 (500-1)	1460-2 688 (700-2)	1460-2¼ 688 (700-2¼)