

WAAS CH <b>82405</b> <b>W19A</b>	APP CRS <b>184°</b>	Rwy Idg TDZE Apt Elev	<b>6501</b> <b>769</b> <b>772</b>
--	------------------------	-----------------------------	---

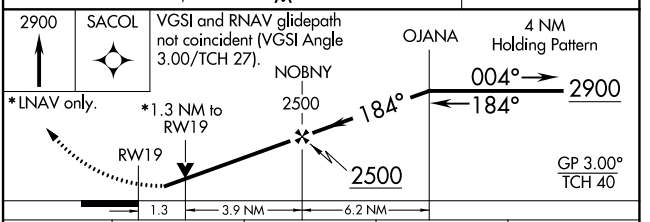
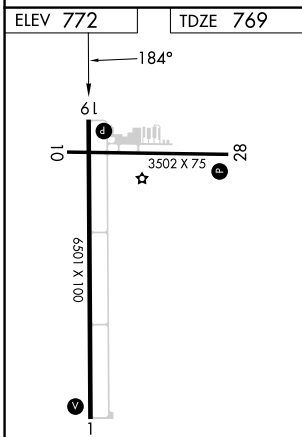
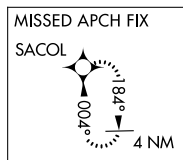
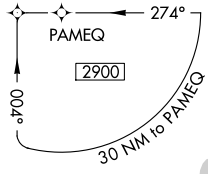
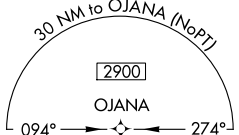
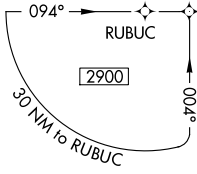
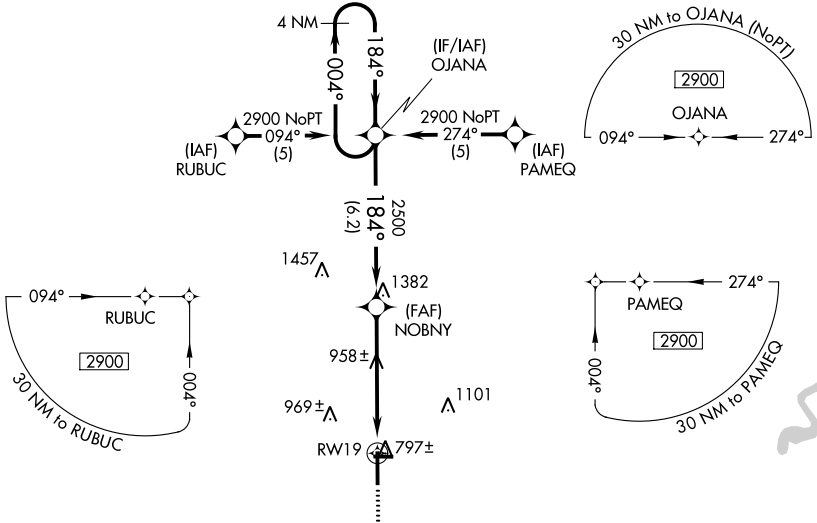
# RNAV (GPS) RWY 19

FREMONT MUNI (F'FX)

Baro-VNAV NA when using Muskegon altimeter setting. For uncompensated Baro-VNAV systems, LNAV/VNAV NA below -16°C (4°F) or above 47°C (116°F). Rwy 19 helicopter visibility reduction below 3/4 SM NA. DME/DME RNP-0.3 NA. When local altimeter setting not received, use Muskegon altimeter setting and increase all DA 65 feet, and all visibilities 1/4 mile. Increase all MDA 80 feet, and Cat C/D visibilities 1/4 mile. VDP NA when using Muskegon altimeter setting.

MISSED APPROACH:  
Climb to 2900 direct  
SACOL and hold.

AWOS-3 <b>118.775</b>	GREAT LAKES APP CON ★ <b>119.8 290.35</b>	CLNC DEL <b>118.25</b>	UNICOM <b>123.0</b> (CTAF) <b>0</b>
--------------------------	--	---------------------------	--



CATEGORY	A	B	C	D
LPV DA		1074-1	305 (400-1)	
LNAV/VNAV DA		1295-2	526 (600-2)	
LNAV MDA	1220-1	451 (500-1)	1220-1 1/4 451 (500-1 1/4)	1220-1 1/2 451 (500-1 1/2)
CIRCLING	1260-1	488 (500-1)	1460-2 688 (700-2)	1460-2 1/4 688 (700-2 1/4)

REIL Rwy 1 and 19 **0**  
MIRL Rwy 1-19 and 10-28 **0**

EC-1, 26 DEC 2024 to 23 JAN 2025

EC-1, 26 DEC 2024 to 23 JAN 2025