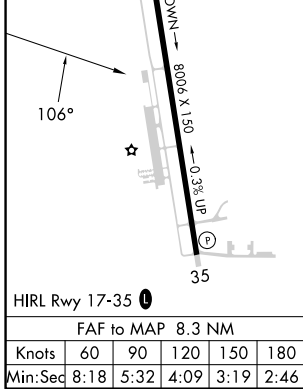
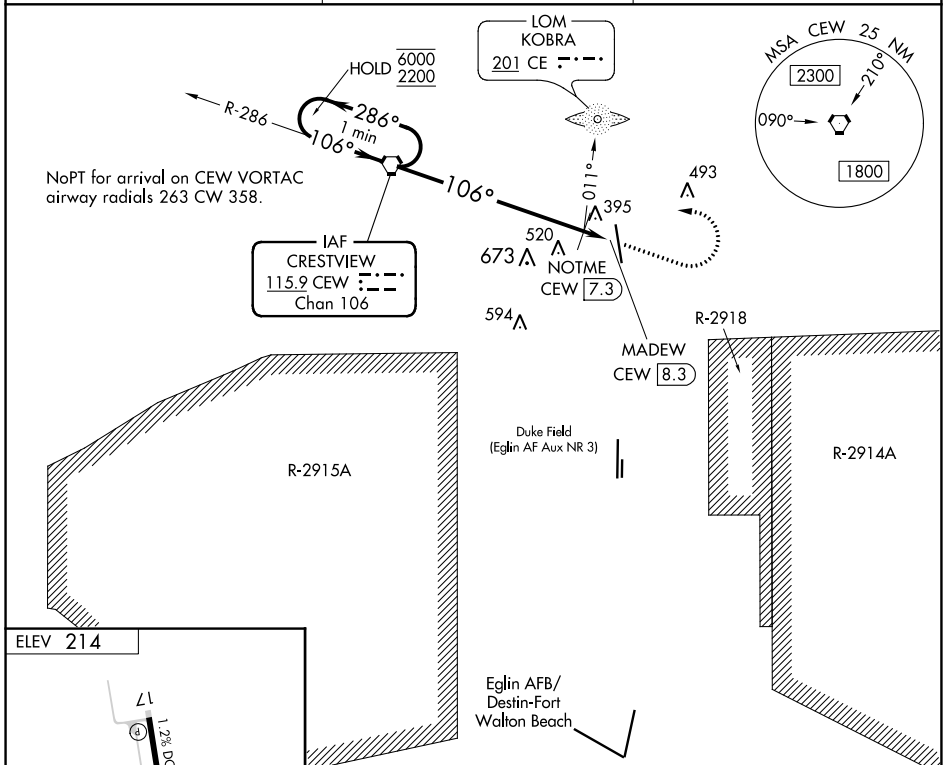


| | | |
|---|------------------------|--|
| VORTAC CEW 115.9 Chan 106 | APP CRS 106° | Rwy ldg TDZE Apt Elev N/A N/A 214 |
|---|------------------------|--|

VOR-A
BOB SIKES(CEW)

| | | |
|---|--|--------------------------------|
| ⚠ Circling NA for Cat D west of Rwy 17-35. When local altimeter setting not received, use Eglin AFB altimeter setting and increase all MDA 60 feet and increase Circling Cat C/D visibility ¼ SM. | MISSED APPROACH: Climb to 1200 then climbing left turn to 2200 direct CEW VORTAC and hold. | |
| ASOS 119.275 | EGLIN APP CON 124.05 284.65 | UNICOM 122.95 (CTAF) |



| | | | | |
|---|------------|-----------------|-----------------|--------------|
| One Minute Holding Pattern | CEW VORTAC | 1200 | 2200 | CEW |
| 6000 ← 286° | → 106° | NOTME CEW [7.3] | MADEW CEW [8.3] | |
| * 960 when using Eglin AFB altimeter setting. | | * 900 | | |
| | | 7.3 NM 1 NM | | |
| CATEGORY | A | B | C | D |
| C CIRCLING | 900-1 | 686 (700-1) | 900-2 | 900-2¼ |
| | | | 686 (700-2) | 686 (700-2¼) |
| NOTME FIX MINIMUMS (ADF OR DME REQUIRED) | | | | |
| C CIRCLING | 700-1 | 486 (500-1) | 820-1¾ | 840-2 |
| | | | 606 (700-1¾) | 626 (700-2) |

| | | | | | |
|--------------------|--|--|--|--|--|
| CRESTVIEW, FLORIDA | | | | | |
| Amdt 12B 28FEB19 | | | | | |

30°47'N-86°31'W

BOB SIKES(CEW)
VOR-A

SE-3, 26 DEC 2024 to 23 JAN 2025

SE-3, 26 DEC 2024 to 23 JAN 2025