

WAAS CH 65705 W03A	APP CRS 027°	Rwy ldg TDZE 5008 996 Apt Elev 996
--	------------------------	--

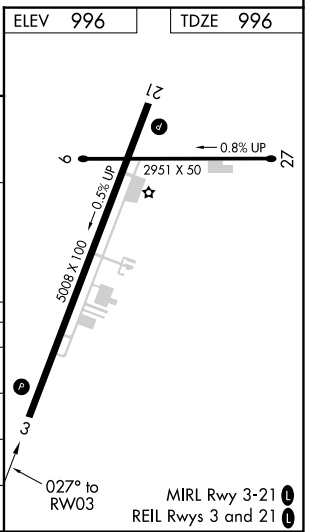
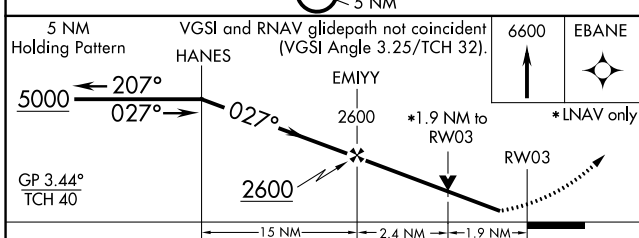
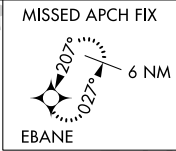
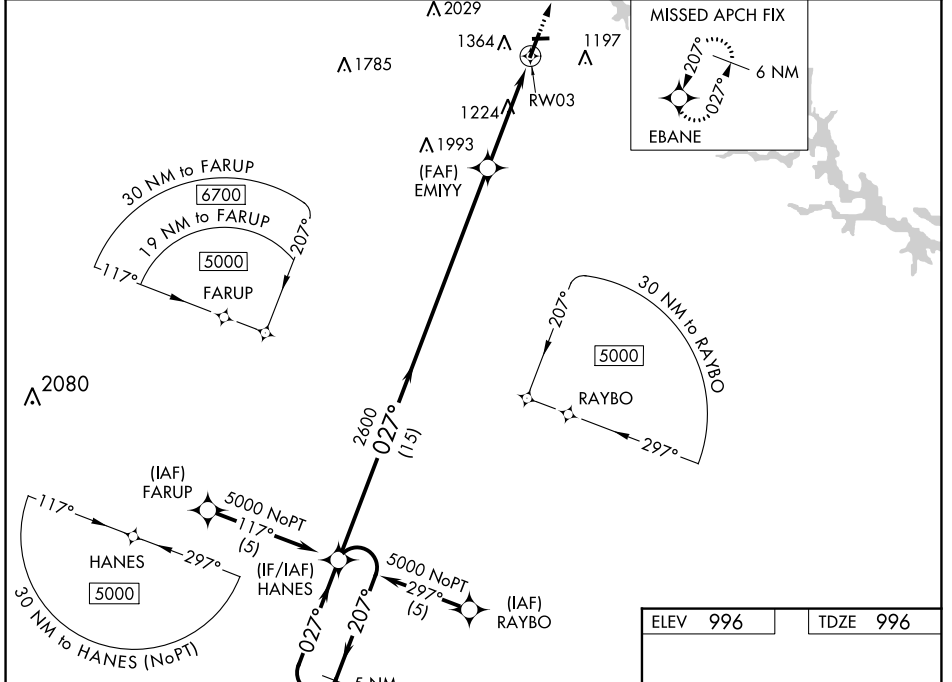
RNAV (GPS) RWY 3

TOCCOA RG LETOURNEAU FLD (TOC)

NA Baro-VNAV and VDP NA when using Gainesville altimeter setting. For uncompensated Baro-VNAV systems, LNAV/VNAV NA below -8°C (18°F) or above 54°C (130°F). DME/DME RNP-0.3 NA. When local altimeter setting not received, use Gainesville altimeter setting and increase LPV DA to 1507 feet, LNAV/VNAV DA to 1859 and all MDA 120 feet. Increase LPV all Cats visibility $\frac{3}{8}$ mile, increase LNAV Cat B visibility $\frac{1}{4}$ mile, Cats C/D $\frac{1}{2}$ mile and Circling Cats A/B/C visibility $\frac{1}{4}$ mile. Helicopter visibility reduction below $\frac{3}{4}$ SM NA.

MISSED APPROACH: Climb to 6600 direct EBANE and hold, continue climb-in-hold to 6600.

AWOS-3 119.625	ATLANTA CENTER 134.8 379.95	UNICOM 122.8 (CTAF)
--------------------------	---------------------------------------	-------------------------------



CATEGORY	A	B	C	D
LPV DA	1392-1 $\frac{1}{8}$ 396 (400-1 $\frac{1}{8}$)			NA
LNAV/VNAV DA	1744-2 $\frac{1}{2}$ 748 (800-2 $\frac{1}{2}$)			NA
LNAV MDA	1680-1 684 (700-1)		1680-2 684 (700-2)	
C CIRCLING	1720-1 724 (800-1)		1760-2 $\frac{1}{4}$ 764 (800-2 $\frac{1}{4}$)	2480-3 1484 (1500-3)

SE-4, 26 DEC 2024 to 23 JAN 2025

SE-4, 26 DEC 2024 to 23 JAN 2025