

APP CRS	Rwy Idg	5006
216°	TDZE	370
	Apt Elev	370

RNAV (GPS) RWY 22

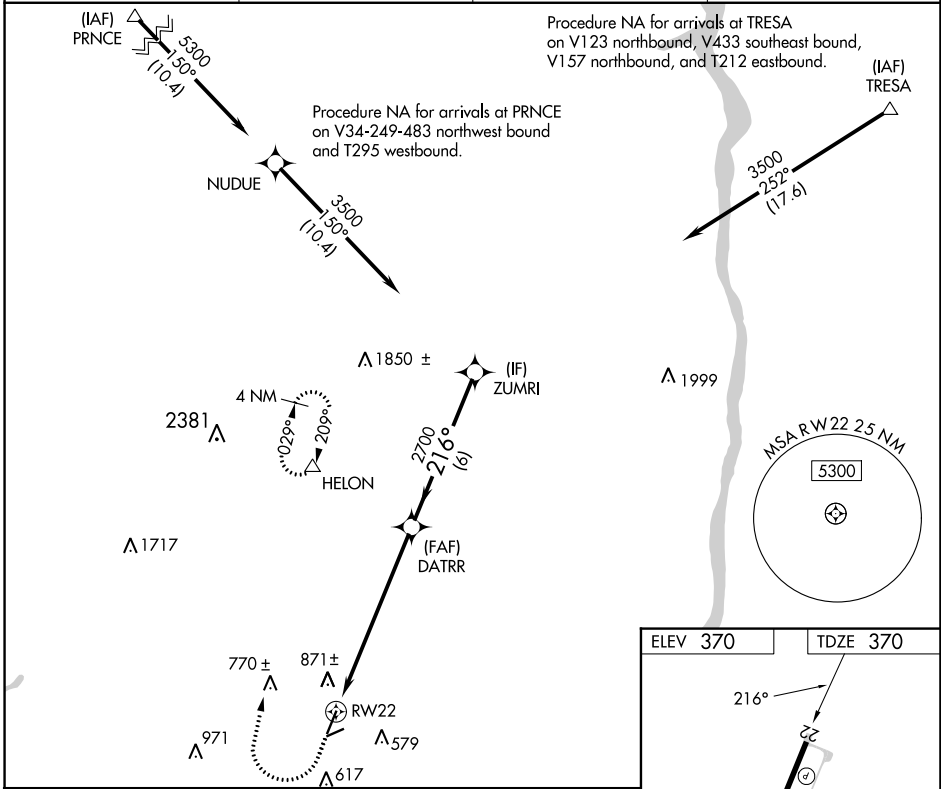
ORANGE COUNTY (MGJ)

RNP APCH.

▼ Rwy 22 helicopter visibility reduction below 1 SM NA.
▲ Straight-in Rwy 22 NA at night, Circling Rwy 8, 22, 26 NA at night.

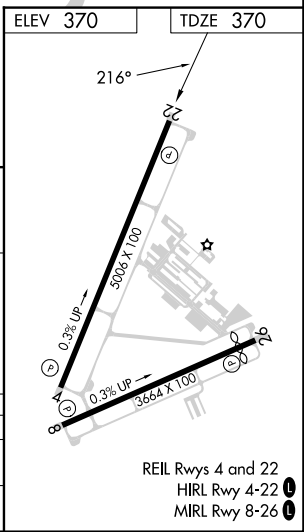
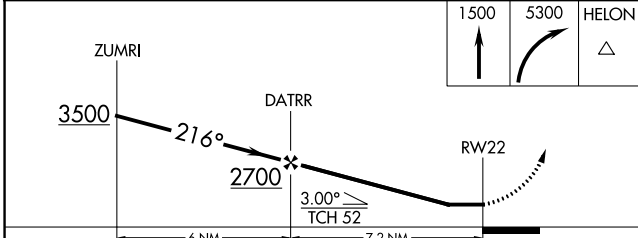
MISSED APPROACH: Climb to 1500 then climbing right turn to 5300 direct HELON and hold, continue climb-in-hold to 5300.

ASOS 119.275	NEW YORK APP CON 132.75 363.1	CLNC DEL 123.85	AUNICOM 122.725 (CTAF) 0
------------------------	-----------------------------------------	---------------------------	------------------------------------



NE-2, 26 DEC 2024 to 23 JAN 2025

NE-2, 26 DEC 2024 to 23 JAN 2025



CATEGORY	A	B	C	D
LNVA MDA	1140-1 770 (800-1)	1140-1¼ 770 (800-1¼)	1140-2½	770 (800-2½)
C CIRCLING	1180-1 810 (900-1)	1180-1¼ 810 (900-1¼)	1180-2½ 810 (900-2½)	1220-2¾ 850 (900-2¾)