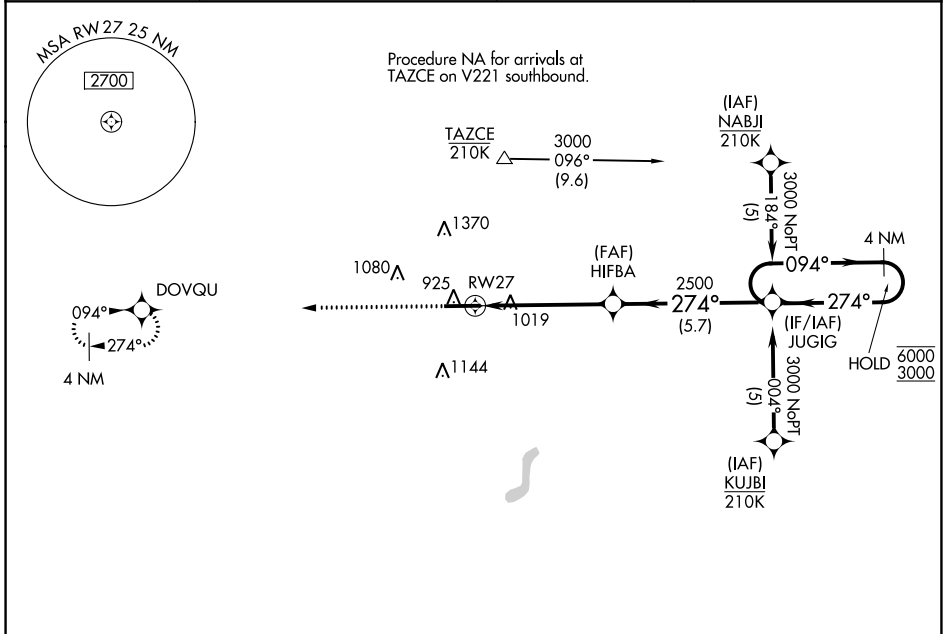


WAAS CH 86401 W27A	APP CRS 274°	Rwy Idg 6355 TDZE 881 Apt Elev 881
--	------------------------	---

RNAV (GPS) RWY 27

DE KALB COUNTY (GWB)

RNP APCH - GPS.		MALSRL	MISSED APPROACH: Climb to 3000 direct DOVQU and hold.
For uncompensated Baro-VNAV systems, LNAV/VNAV NA below -16°C or above 54°C.			
AWOS-3P 124.15	FORT WAYNE APP CON 127.2 284.6	CLNC DEL 126.6	UNICOM 123.0 (CTAF)



ELEV 881	TDZE 881	Δ 1648		
3000 DOVQU HIFBA 2500 1.2 NM to RWY 27 RWY 27 1.2 3.7 NM 5.7 NM JUGIG 4 NM Holding Pattern 094° → 6000 ← 274° 3000 GP 3.00° TCH 47				
CATEGORY	A	B	C	D
LPV DA	1081-1/2 200 (200-1/2)			
LNAV/ VNAV DA	1314-3/4 433 (500-3/4)			
LNAV MDA	1320-1/2 439 (500-1/2)	1320-3/4 439 (500-3/4)		
CIRCLING	1320-1 439 (500-1)	1560-1 679 (700-1)	1720-2 1/2 839 (900-2 1/2)	1720-2 3/4 839 (900-2 3/4)

EC-2, 26 DEC 2024 to 23 JAN 2025

EC-2, 26 DEC 2024 to 23 JAN 2025