

SINTON, TEXAS

AL-5274 (FAA)

24137

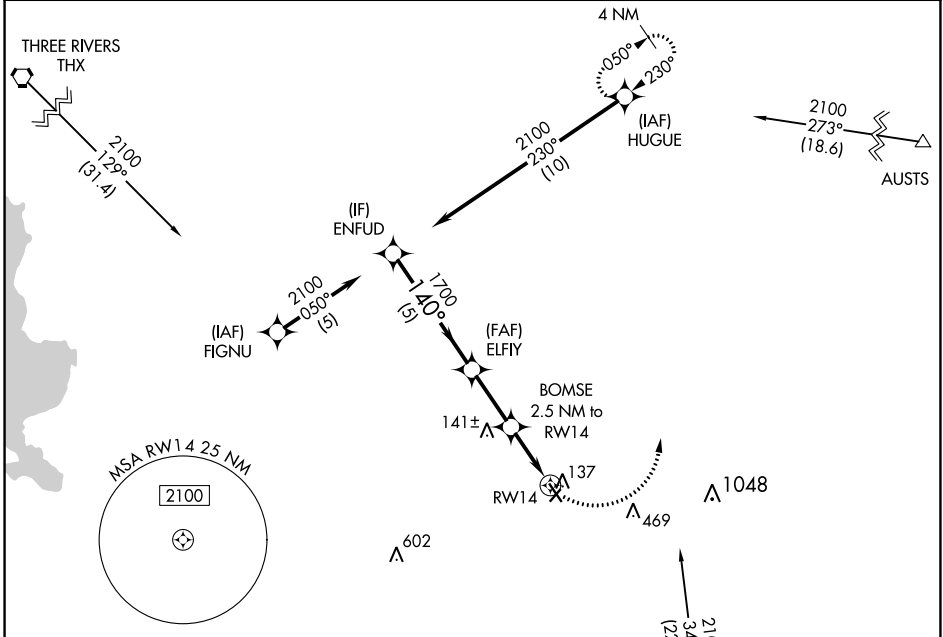
APP CRS	Rwy Idg	4073
140°	TDZE	48
	Apt Elev	48

RNAV (GPS) RWY 14

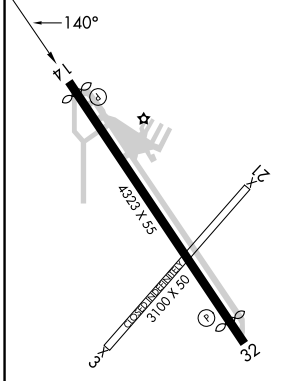
SINTON (T69)

RNP APCH.	MISSED APPROACH: Climbing left turn to 2100 direct HUGUE and hold.
<p>▼ Procedure NA at night.</p> <p>▲ Rwy 14 helicopter visibility reduction below 1 SM NA.</p>	

AWOS-3 118.25	CORPUS APP CON 120.9 348.725	UNICOM 122.8 (CTAF) 0
-------------------------	--	---------------------------------

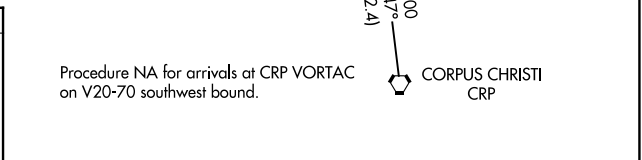


ELEV 48	TDZE 48
---------	---------



MIRL Rwy 14-32 0

REL Rwy 14 and 32 0



	ENFU		ELFY		BOMSE		RWY 14	
	2100		1700		1040			
	5 NM		2.5 NM		2.5 NM			
CATEGORY	A		B		C		D	
LNAV MDA	480-1		432 (500-1)				NA	
CIRCLING	620-1		720-1				NA	
	572 (600-1)		672 (700-1)					

SINTON, TEXAS
Orig-B 31DEC20

28°02'N-97°33'W

RNAV (GPS) RWY 14

SINTON (T69)

SC-3, 26 DEC 2024 to 23 JAN 2025

SC-3, 26 DEC 2024 to 23 JAN 2025