

SINTON, TEXAS

AL-5274 (FAA)

24137

VORTAC CRP 115.5	APP CRS 138°	Rwy ldg TDZE Apt Elev	4073 48 48
----------------------------	------------------------	-----------------------------	---------------------------------------

VOR RWY 14

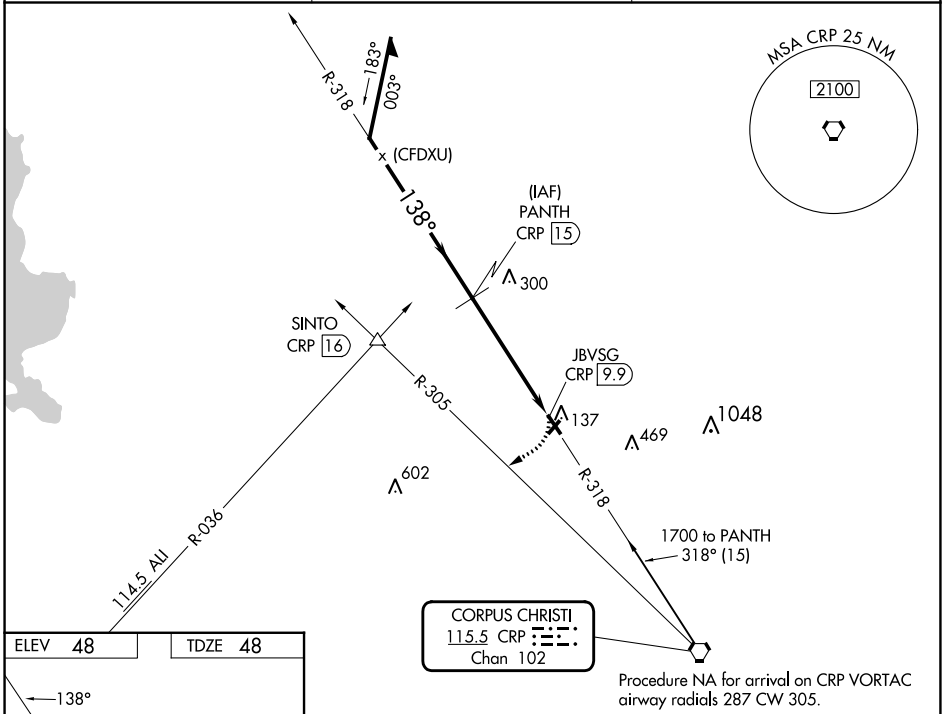
SINTON (T69)

DME required.

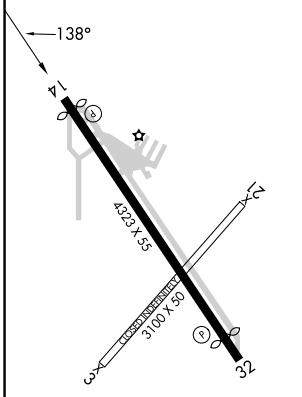
Procedure NA at night.
Rwy 14 helicopter visibility reduction below 1 SM NA.

MISSED APPROACH: Climbing right turn to 1800 on heading 230° and CRP VORTAC R-305 to SINTO INT/CRP 16 DME.

AWOS-3 118.25	CORPUS APP CON 120.9 348.725	UNICOM 122.8 (CTAF) 0
-------------------------	--	--



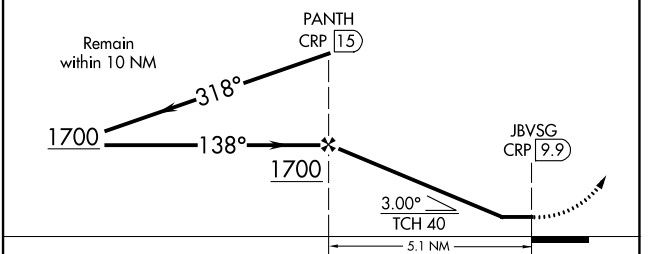
ELEV 48	TDZE 48
----------------	----------------



MIRL Rwy 14-32 **0**
REIL Rwy 14 and 32 **0**

VGSI and descent angles not coincident (VGSI Angle 3.00°/TCH 19).

1800 hdg 230°	CRP R-305	SINTO △
---------------------	--------------	------------



CATEGORY	A	B	C	D
S-14	640-1	592 (600-1)		NA
CIRCLING	640-1 592 (600-1)	720-1 672 (700-1)		NA

SINTON, TEXAS
Amdt 1C 31DEC20

28°02' N-97°33' W

SINTON (T69) VOR RWY 14

SC-3, 26 DEC 2024 to 23 JAN 2025

SC-3, 26 DEC 2024 to 23 JAN 2025