

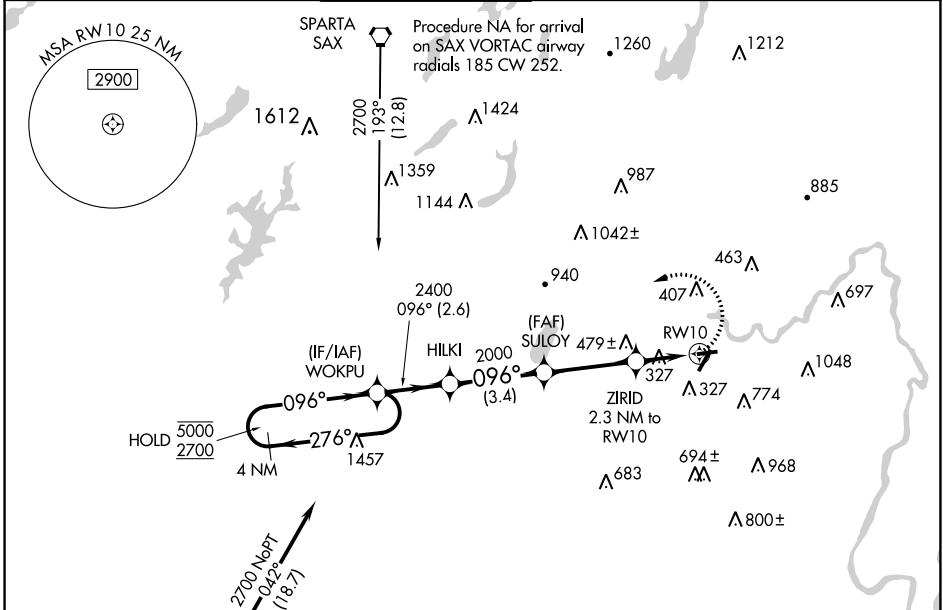
WAAS CH 81922 W10A	APP CRS 096°	Rwy Idg TDZE Apt Elev	2822 172 172
--	------------------------	-----------------------------	---

RNAV (GPS) RWY 10

ESSEX COUNTY (CDW)

RNP APCH.		MISSED APPROACH: Climbing left turn to 2700 direct WOKPU and hold.			
▽	Procedure NA at night.				
▲	Rwy 10 helicopter visibility reduction below 1 SM NA.				

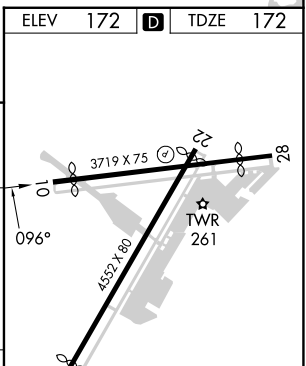
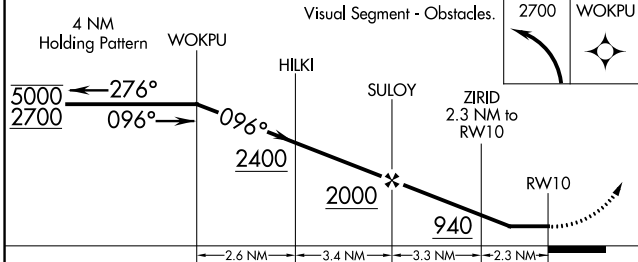
ATIS 135.5	NEWARK APP CON 127.6 379.9	CALDWELL TOWER ★ 119.8 (CTAF) 0	GND CON 121.9	CLNC DEL 121.1	UNICOM 122.95
----------------------	--------------------------------------	---	-------------------------	--------------------------	-------------------------



NE-2, 26 DEC 2024 to 23 JAN 2025

NE-2, 26 DEC 2024 to 23 JAN 2025

ELEV 172	D	TDZE 172
----------	----------	----------



CATEGORY	A	B	C	D
LP MDA	600-1	428 (500-1)	600-1¼	428 (500-1¼)
LNAV MDA	740-1	568 (600-1)	740-1½	568 (600-1½)
C CIRCLING	960-1 788 (800-1)	1040-1¼ 868 (900-1¼)	1100-2¾ 928 (1000-2¾)	1400-3 1228 (1300-3)

- REIL Rwy 22 **0**
- MIRL Rwy 10-28 **0**
- HIRL Rwy 4-22 **0**