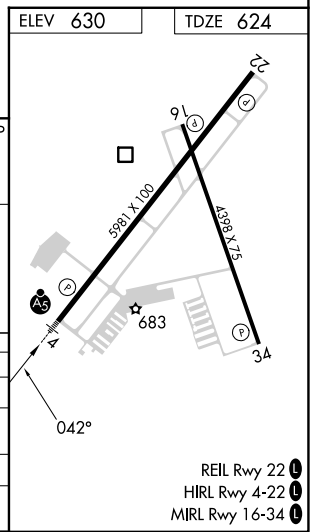
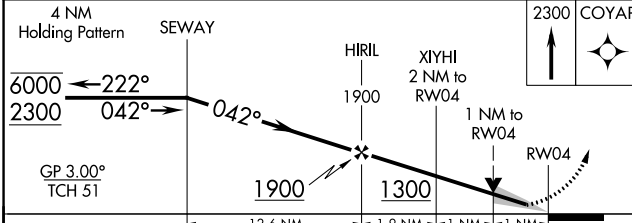
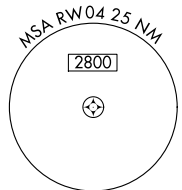
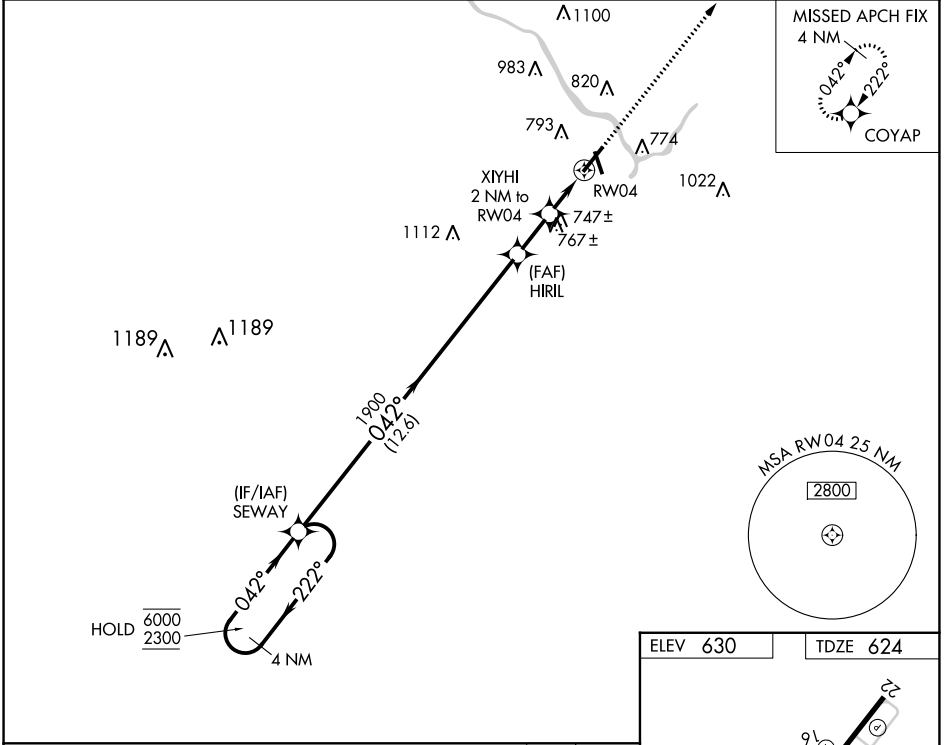


WAAS CH <b>42799</b> <b>W04A</b>	APP CRS <b>042°</b>	Rwy Idg TDZE Apt Elev	<b>5981</b> <b>624</b> <b>630</b>
--	------------------------	-----------------------------	---

# RNAV (GPS) RWY 4

GREATER KANKAKEE (IKK)

RNP APCH - GPS.		MALSR	MISSED APPROACH: Climb to 2300 direct COYAP and hold.
<p><b>▽</b> Circling Rwy 16, 34 NA at night. For uncompensated Baro-VNAV systems, LNAV/VNAV NA below -16°C or above 54°C. For inop ALS, increase LNAV Cats C/D to 1 SM.</p> <p><b>▲</b></p>			
AWOS-3 <b>128.475</b>	CHICAGO CENTER <b>132.5 284.7</b>	UNICOM <b>123.0 (CTAF) 0</b>	



ELEV 630	TDZE 624																									
<table border="1"> <thead> <tr> <th>CATEGORY</th> <th>A</th> <th>B</th> <th>C</th> <th>D</th> </tr> </thead> <tbody> <tr> <td>LPV DA</td> <td></td> <td>824-1/2</td> <td>200 (200-1/2)</td> <td></td> </tr> <tr> <td>LNAV/VNAV DA</td> <td></td> <td>1010-5/8</td> <td>386 (400-5/8)</td> <td></td> </tr> <tr> <td>LNAV MDA</td> <td>1000-1/2</td> <td>376 (400-1/2)</td> <td>1000-5/8</td> <td>376 (400-5/8)</td> </tr> <tr> <td><b>C</b> CIRCLING</td> <td>1080-1 450 (500-1)</td> <td>1100-1 470 (500-1)</td> <td>1140-1 1/2 510 (600-1 1/2)</td> <td>1340-2 1/4 710 (800-2 1/4)</td> </tr> </tbody> </table>		CATEGORY	A	B	C	D	LPV DA		824-1/2	200 (200-1/2)		LNAV/VNAV DA		1010-5/8	386 (400-5/8)		LNAV MDA	1000-1/2	376 (400-1/2)	1000-5/8	376 (400-5/8)	<b>C</b> CIRCLING	1080-1 450 (500-1)	1100-1 470 (500-1)	1140-1 1/2 510 (600-1 1/2)	1340-2 1/4 710 (800-2 1/4)
CATEGORY	A	B	C	D																						
LPV DA		824-1/2	200 (200-1/2)																							
LNAV/VNAV DA		1010-5/8	386 (400-5/8)																							
LNAV MDA	1000-1/2	376 (400-1/2)	1000-5/8	376 (400-5/8)																						
<b>C</b> CIRCLING	1080-1 450 (500-1)	1100-1 470 (500-1)	1140-1 1/2 510 (600-1 1/2)	1340-2 1/4 710 (800-2 1/4)																						

- REIL Rwy 22 0
- HIRL Rwy 4-22 0
- MIRL Rwy 16-34 0

EC-3, 26 DEC 2024 to 23 JAN 2025

EC-3, 26 DEC 2024 to 23 JAN 2025