

|  |                        |   |             |
|--|------------------------|---|-------------|
| WAAS<br>CH <b>58130</b><br><b>W10A</b> | APP CRS<br><b>099°</b> | Rwy Idg<br>TDZE <b>1892</b><br>Apt Elev <b>1892</b> | <b>3597</b> |
|--|------------------------|---|-------------|

# RNAV (GPS) RWY 10

GRAND CANYON RGNL (N38)

RNP APCH.

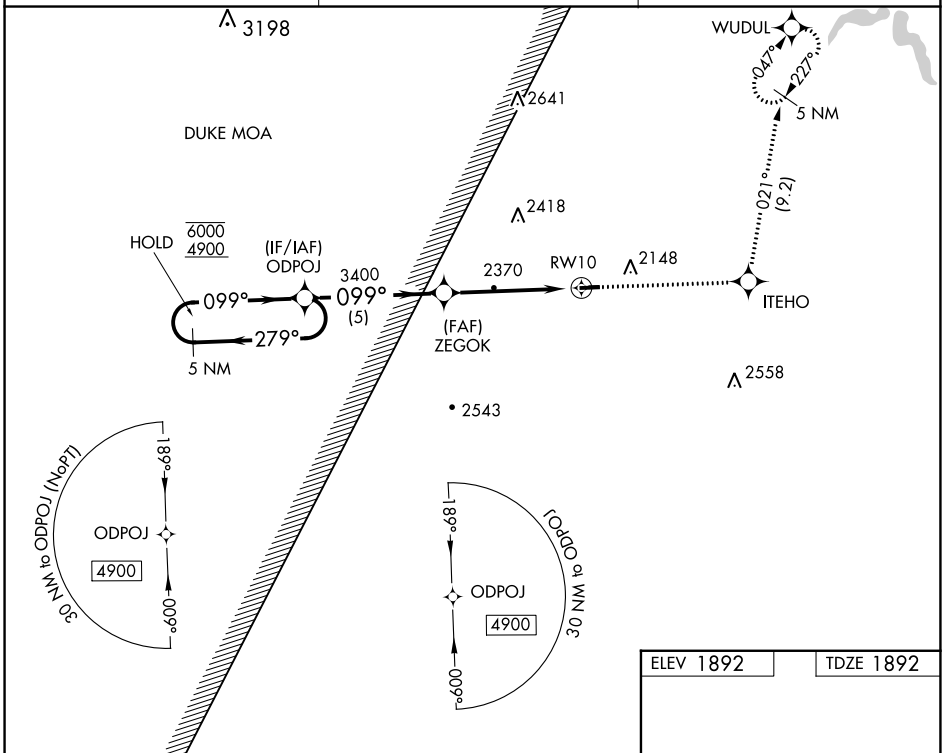
- ▼ Circling NA to Rws 11 and 29. Procedure NA at night.
- ▲ Rwy 10 helicopter visibility reduction below 1 SM NA.

MISSED APPROACH: Climb to 4500 direct ITEHO and on track 021° to WUDUL and hold.

AWOS-3PT  
**120.925**

ELMIRA APP CON ★  
**128.425 257.8**

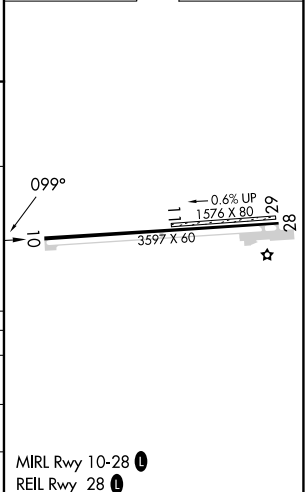
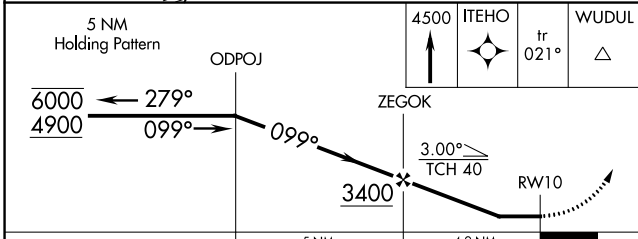
UNICOM  
**122.8** (CTAF) **0**



NE-4, 26 DEC 2024 to 23 JAN 2025

NE-4, 26 DEC 2024 to 23 JAN 2025

|           |           |
|-----------|-----------|
| ELEV 1892 | TDZE 1892 |
|-----------|-----------|



| CATEGORY          | A                       | B                       | C                       | D  |
|-------------------|-------------------------|-------------------------|-------------------------|----|
| LP MDA            | 2760-1<br>868 (900-1)   | 2760-1¼<br>868 (900-1¼) | 2760-2½<br>868 (900-2½) | NA |
| LNAV MDA          | 2760-1<br>868 (900-1)   | 2760-1¼<br>868 (900-1¼) | 2760-2½<br>868 (900-2½) | NA |
| <b>C</b> CIRCLING | 2760-1¼<br>868 (900-1¼) | 2760-2½<br>868 (900-2½) | 2760-2½<br>868 (900-2½) | NA |

MIRL Rwy 10-28 **0**  
REIL Rwy 28 **0**