

LOC I-MTW	APP CRS	Rwy Idg	5001
111.3	172°	TDZE	651
		Apt Elev	651

ILS or LOC RWY 17

MANITOWOC COUNTY (MTW)

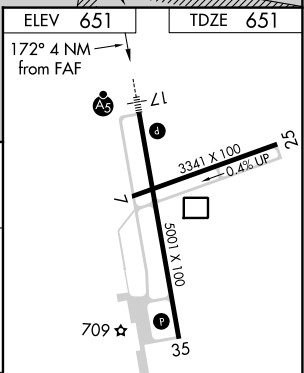
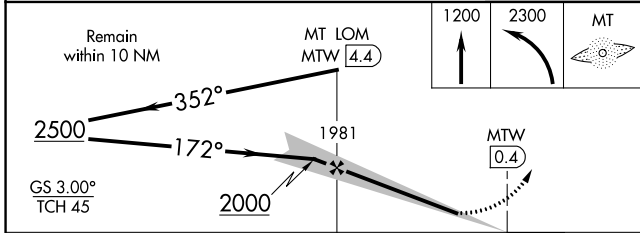
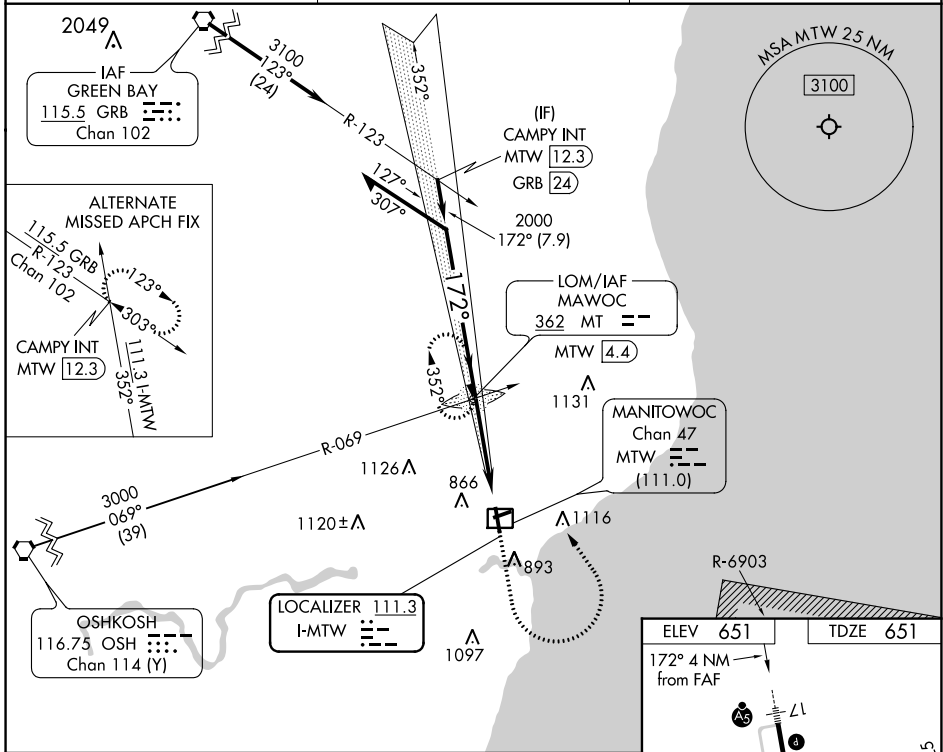
ADF required.

MALSR

MISSED APPROACH: Climb to 1200 then climbing left turn to 2300 direct MAWOC LOM and hold.

For inop ALS, increase S-LOC 17 Cat C/D visibility to 1 3/8 SM.

AWOS-3PT 123.775	GREEN BAY APP CON* 120.2 338.2	UNICOM 122.8 (CTAF)
----------------------------	--	-------------------------------



CATEGORY	A	B	C	D
S-ILS 17		851-1/2	200 (200-1/2)	
S-LOC 17	1160-1/2	509 (600-1/2)	1160-1	509 (600-1)
C CIRCLING	1200-1	549 (600-1)	1420-2 1/4 769 (800-2 1/4)	1480-2 3/4 829 (900-2 3/4)

REIL Rwy 35 \bullet

MIRL Rwy 7-25 \bullet

HIRL Rwy 17-35 \bullet

FAF to MAP 4 NM

Knots	60	90	120	150	180
Min:Sec	4:00	2:40	2:00	1:36	1:20

EC-3, 26 DEC 2024 to 23 JAN 2025

EC-3, 26 DEC 2024 to 23 JAN 2025