

LOC I-OUT 111.5	APP CRS 274°	Rwy Idg 6500
		TDZE 778
		Apt Elev 778

ILS or LOC RWY 27

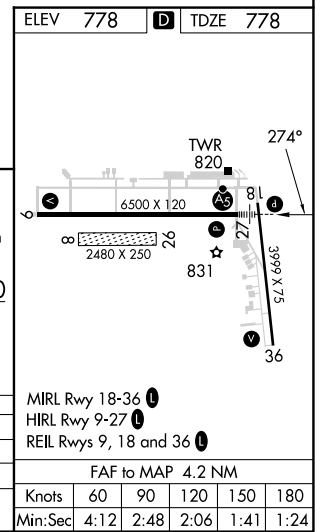
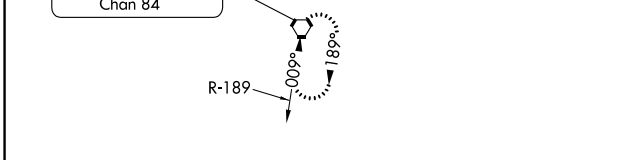
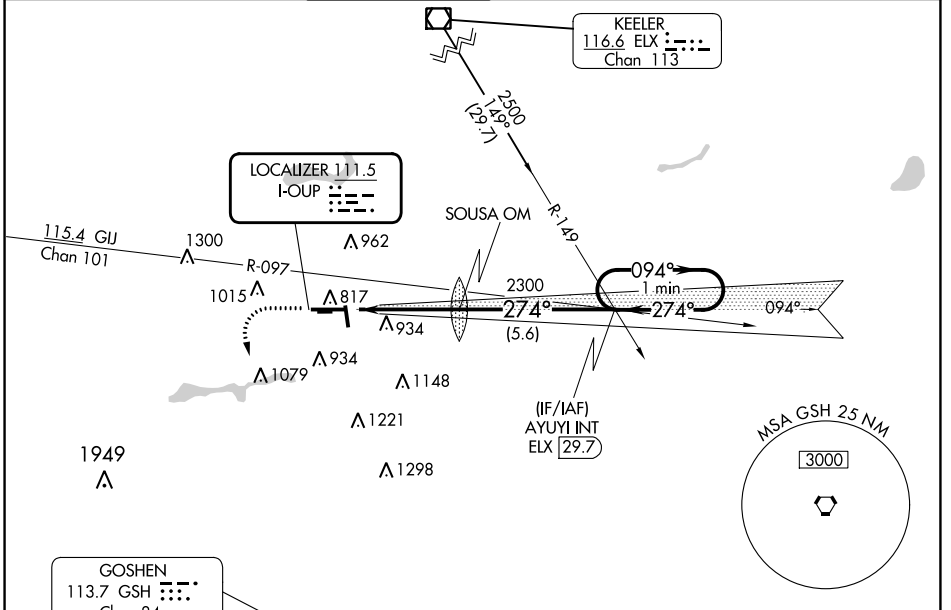
ELKHART MUNI (EKM)

⚠ When local altimeter setting not received, use South Bend altimeter setting and increase all DA/MDA 40 feet, and increase S-LOC 27 Cat C/D visibility to RVR 5000. Circling Rwy 36 NA at night. Circling NA to Rws 8 and 26. Rwy 27 helicopter visibility reduction below RVR 4000 NA. For inop ALS, increase S-ILS 27 all Cats visibility to RVR 4500 and S-LOC 27 Cat A/B visibility to RVR 5500. For inop ALS when using South Bend altimeter setting, increase S-LOC 27 Cat A/B visibility to RVR 5500 and Cat C/D visibility to 1 1/2 SM.

MALS
AS

MISSED APPROACH:
Climb to 1500 then climbing left turn to 2500 direct GSH VORTAC and hold.

AWOS-3 124.475	SOUTH BEND APP CON * 118.55 257.8	ELKHART TOWER * 119.5 (CTAF) 0	GND CON 121.8	CLNC DEL 121.8	CLNC DEL 119.7 (When twr closed)	UNICOM 122.95
--------------------------	---	--	-------------------------	--------------------------	---	-------------------------



1500	2500	GSH
↑	↷	⬡

CATEGORY	A	B	C	D
S-ILS 27		1066/40	288 (300-3/4)	
S-LOC 27	1220/40	442 (500-3/4)	1220/45	442 (500-7/8)
C CIRCLING	1240-1 462 (500-1)	1300-1 522 (600-1)	1380-1 3/4 602 (700-1 3/4)	1580-2 1/2 802 (900-2 1/2)

EC-2, 26 DEC 2024 to 23 JAN 2025

EC-2, 26 DEC 2024 to 23 JAN 2025