

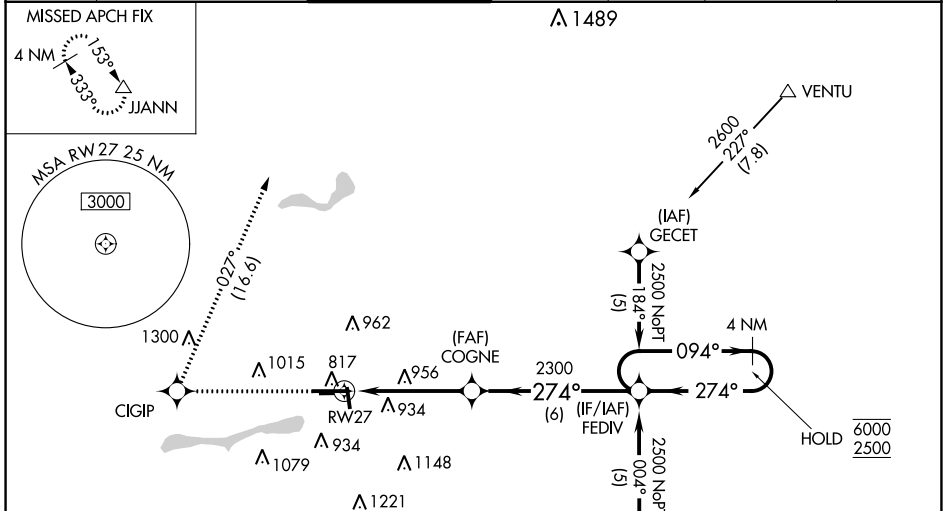
WAAS CH 50107 W27A	APP CRS 274°	Rwy Idg TDZE 778 Apt Elev 778	6500
--	------------------------	---	-------------

RNAV (GPS) RWY 27

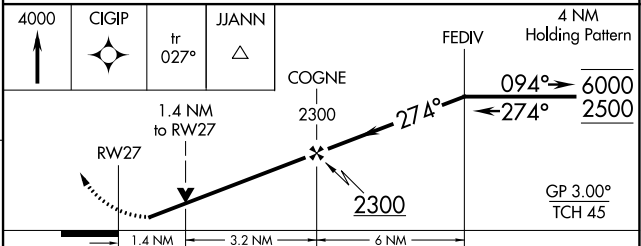
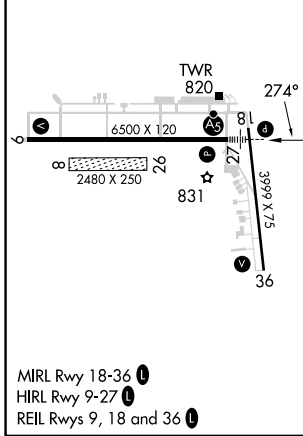
ELKHART MUNI (EKM)

RNP APCH - GPS.		<p>▼ Circling NA to Rwy 8 and 26. Circling Rwy 36 NA at night. Baro-VNAV and VDP NA when using South Bend altimeter setting. Rwy 27 helicopter visibility reduction below RVR 4000 NA. For uncompensated Baro-VNAV systems, LNAV/VNAV NA below -16°C or above 54°C. When local altimeter setting not received, use South Bend altimeter setting: increase LPV DA to 1111 feet; increase LNAV/VNAV DA to 1261 feet; increase all MDA 40 feet and LNAV visibility Cat C/D to RVR 5500, Circling Cat D visibility ½ SM. For inop ALS, increase LPV all Cats visibility to RVR 4500, LNAV/VNAV all Cats visibility to 1¾ SM, LNAV Cat A/B visibility to RVR 5500 and Cat C/D to 1¾ SM. For inop ALS when using South Bend altimeter setting, increase LNAV/VNAV all Cats visibility to 1¾ SM and LNAV Cat A/B to RVR 5500.</p>		<p>MALSRS</p>		<p>MISSED APPROACH: Climb to 4000 direct CIGIP and on track 027° to JJANN and hold.</p>	
-----------------	--	---	--	---------------	--	---	--

AWOS-3 124.475	SOUTH BEND APP CON * 118.55 257.8	ELKHART TOWER * 119.5 (CTAF) 0	GND CON 121.8	CLNC DEL 121.8	CLNC DEL 119.7 (When twr closed)	UNICOM 122.95
--------------------------	---	--	-------------------------	--------------------------	---	-------------------------



ELEV 778	D	TDZE 778
----------	----------	----------



CATEGORY	A	B	C	D
LPV DA		1071/40	293 (300-¾)	
LNAV/VNAV DA		1221/50	443 (500-1)	
LNAV MDA	1260/40	482 (500-¾)	1260/50	482 (500-1)
C CIRCLING	1260-1 482 (500-1)	1300-1 522 (600-1)	1380-1¾ 602 (700-1¾)	1580-2½ 802 (900-2½)

EC-2, 26 DEC 2024 to 23 JAN 2025

EC-2, 26 DEC 2024 to 23 JAN 2025