

VORTAC GJ 115.4 Chan 101	APP CRS 102°	Rwy Idg TDZE 777 Apt Elev 778
--	------------------------	---

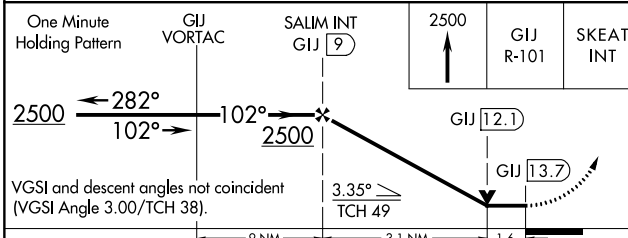
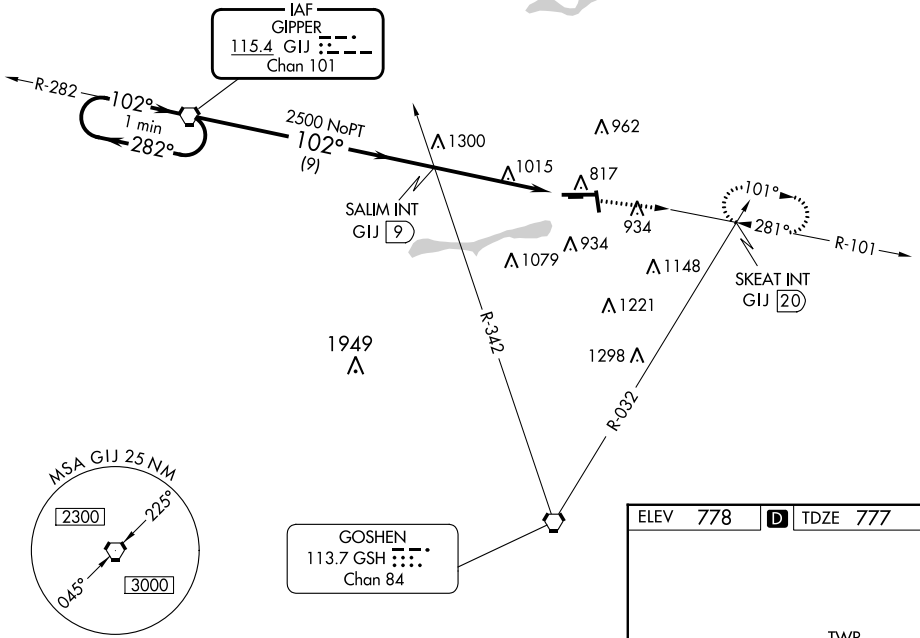
VOR RWY 9
ELKHART MUNI (EKM)

⚠ Circling Rwy 36 NA at night. Circling NA to Rwy 8 and 26. Rwy 9 helicopter visibility reduction below 3/4 SM NA. When local altimeter setting not received, use South Bend altimeter setting and increase all MDA 40 feet. VDP NA when using South Bend altimeter setting.

MISSED APPROACH: Climb to 2500 via GJ R-101 to SKEAT INT/GJ 20 DME and hold.

AWOS-3 124.475	SOUTH BEND APP CON ★ 118.55 257.8	ELKHART TOWER ★ 119.5 (CTAF) 0	GND CON 121.8	CLNC DEL 121.8	CLNC DEL 119.7 (When twr closed)	UNICOM 122.95
--------------------------	---	--	-------------------------	--------------------------	---	-------------------------

NoPT for arrivals on GJ VORTAC
airway radials 209 CW 310.



ELEV 778 TDZE 777

TWR 820

6500 X 120

2480 X 250

27

81

831

36

MIRL Rwy 18-36
HIRL Rwy 9-27
REIL Rwy 9, 18 and 36

FAF to MAP 4.7 NM

Knots	60	90	120	150	180
Min:Sec	4:42	3:08	2:21	1:53	1:34

CATEGORY	A	B	C	D
S-9	1340-1 563 (600-1)	1340-1½ 563 (600-1½)	1340-1¾ 563 (600-1¾)	1340-2 563 (600-2)
CIRCLING	1340-1 562 (600-1)	1380-1¾ 602 (700-1¾)	1580-2½ 802 (900-2½)	

EC-2, 26 DEC 2024 to 23 JAN 2025

EC-2, 26 DEC 2024 to 23 JAN 2025