

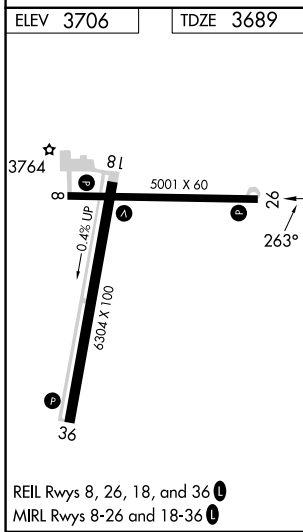
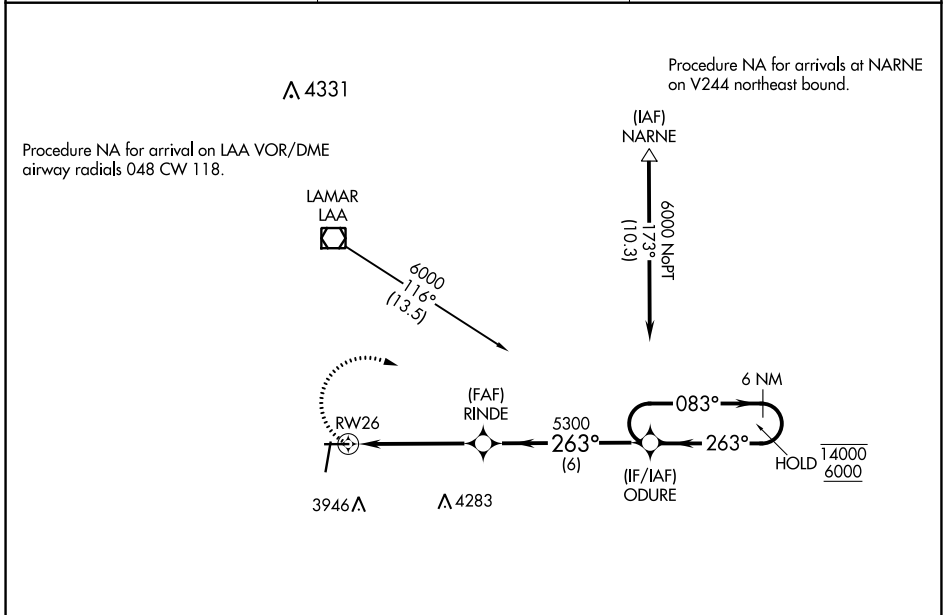
APP CRS 263°	Rwy Idg TDZE Apt Elev	5001 3689 3706
------------------------	-----------------------------	---

RNAV (GPS) RWY 26

SOUTHEAST COLORADO RGNL (L.A.A)

RNP APCH.	MISSED APPROACH: Climbing right turn to 6000 direct ODURE and hold.
<p>▽</p> <p>▲ Rwy 26 helicopter visibility reduction below 3/4 SM NA.</p>	

ASOS 135,625	DENVER CENTER 133.4 377.175	UNICOM 122.8 (CTAF) 0
------------------------	---------------------------------------	---------------------------------



MSA RW26 25 NM	6100			
CATEGORY	A	B	C	D
LNAV MDA	4180-1	491 (500-1)	4180-1 ³ / ₈ 491 (500-1 ³ / ₈)	4180-1 ¹ / ₂ 491 (500-1 ¹ / ₂)

SW-1, 26 DEC 2024 to 23 JAN 2025

SW-1, 26 DEC 2024 to 23 JAN 2025