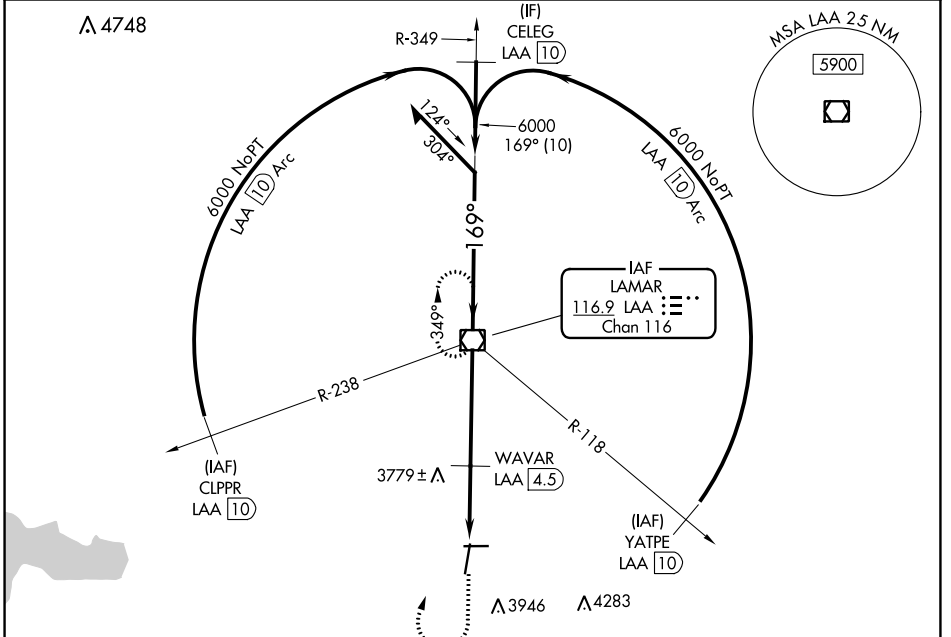


VOR/DME LAA 116.9 Chan 116	APP CRS 169°	Rwy Idg TDZE Apt Elev	6304 3695 3706
--	------------------------	-----------------------------	---

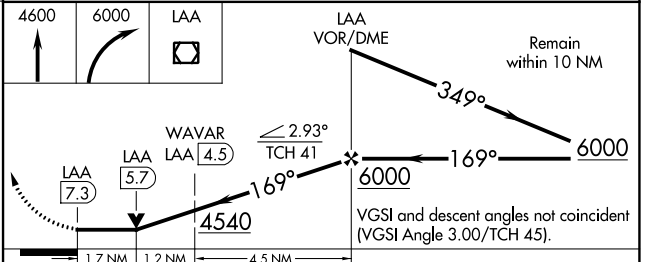
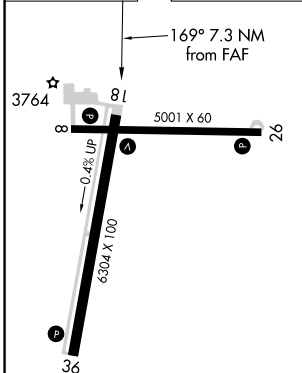
VOR RWY 18
SOUTHEAST COLORADO RGNL (LAA)

MISSED APPROACH: Climb to 4600 then climbing right turn to 6000 direct LAA VOR/DME and hold.

ASOS 135.625	DENVER CENTER 133.4 377.175	UNICOM 122.8 (CTAF)
------------------------	---------------------------------------	-------------------------------



ELEV 3706	TDZE 3695
-----------	-----------



CATEGORY	A	B	C	D
S-18	4540-1 845 (900-1)	4540-1¼ 845 (900-1¼)	4540-2½ 845 (900-2½)	4540-2¾ 845 (900-2¾)
CIRCLING	4540-1¼	834 (900-1¼)	4540-2½ 834 (900-2½)	4540-2¾ 834 (900-2¾)
DME MINIMUMS				
S-18	4260-1 565 (600-1)	4260-1⅝ 565 (600-1⅝)	4260-1¾ 565 (600-1¾)	4260-2 565 (600-2)
CIRCLING	4420-1 714 (800-1)	4420-2 714 (800-2)	4420-2¼ 714 (800-2¼)	4420-2½ 714 (800-2½)

REIL Rwys 8, 26, 18, and 36					
MIRL Rwys 8-26 and 18-36					
FAF to MAP 7.3 NM					
Knots	60	90	120	150	180
Min:Sec	7:18	4:52	3:39	2:55	2:26

SW-1, 26 DEC 2024 to 23 JAN 2025

SW-1, 26 DEC 2024 to 23 JAN 2025