

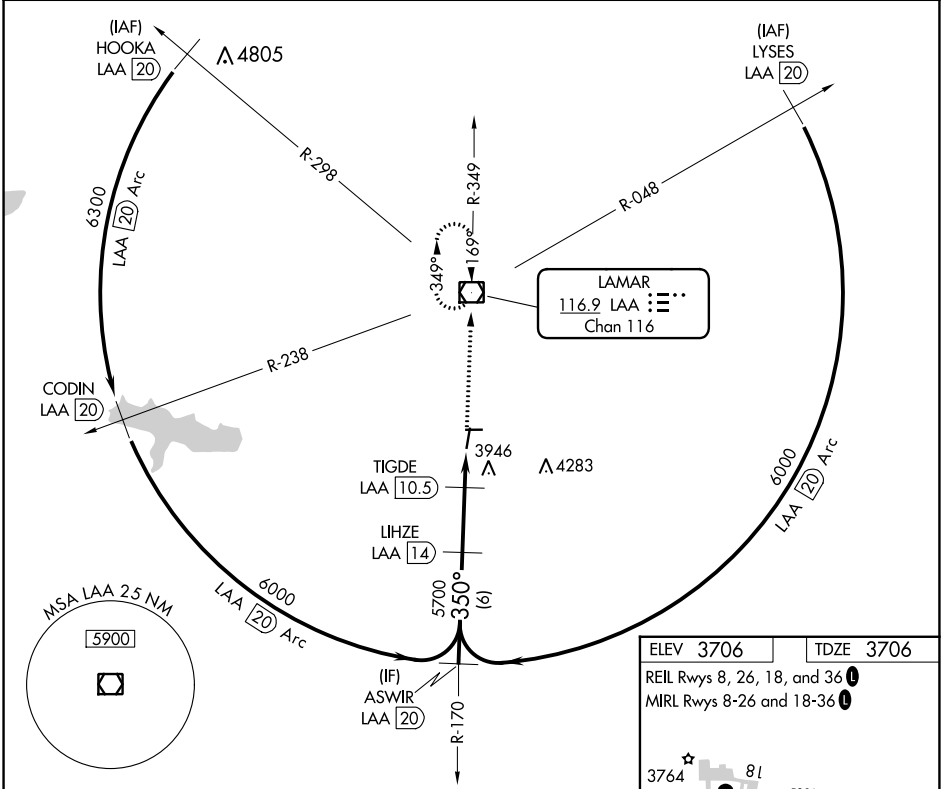
VOR/DME LAA <b>116.9</b> Chan <b>116</b>	APP CRS <b>350°</b>	Rwy Idg TDZE Apt Elev	<b>6304</b> <b>3706</b> <b>3706</b>
--	------------------------	-----------------------------	---

# VOR RWY 36

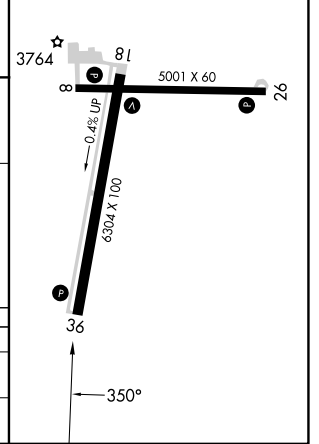
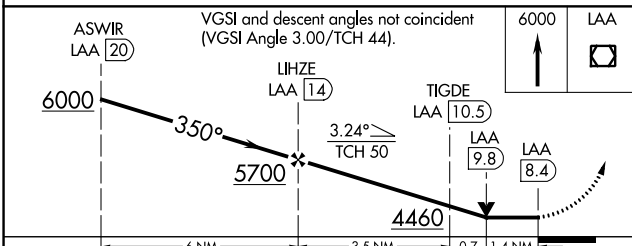
SOUTHEAST COLORADO RGNL (LAA)

DME required.	MISSED APPROACH: Climb to 6000 direct LAA VOR/DME and hold.
Rwy 36 helicopter visibility reduction below 3/4 SM NA.	

ASOS <b>135.625</b>	DENVER CENTER <b>133.4 377.175</b>	UNICOM <b>122.8 (CTAF) 0</b>
------------------------	---------------------------------------	---------------------------------



ELEV 3706	TDZE 3706
REIL Rwy 8, 26, 18, and 36	
MIRL Rwy 8-26 and 18-36	



CATEGORY	A	B	C	D
S-36	4200-1 494 (500-1)		4200-1 3/8 494 (500-1 3/8)	4200-1 1/2 494 (500-1 1/2)
CIRCLING	4420-1 714 (800-1)		4420-2 714 (800-2)	4420-2 1/4 714 (800-2 1/4)

SW-1, 26 DEC 2024 to 23 JAN 2025

SW-1, 26 DEC 2024 to 23 JAN 2025