

(KAYLN3.KAYLN) 24137

KAYLN THREE DEPARTURE (RNAV)

AL-5293 (FAA)

OAKLAND/TROY (VLL)

TROY, MICHIGAN

EC-1, 26 DEC 2024 to 23 JAN 2025

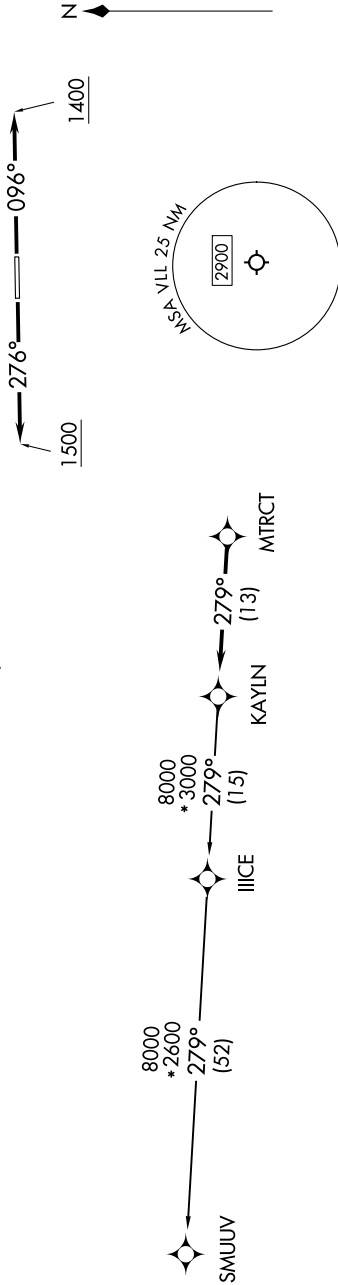
**TOP ALTITUDE:
ASSIGNED AT ATC**

RNAV-1 DME/DME/IRU or GPS.
RADAR required.

TAKEOFF MINIMUMS:
Rwy 10: Standard.
Rwy 28: Standard with minimum climb of 476' per NM to 1500.

DETROIT DEP CON
132.35 284.0
AWOS-3
119.475
CTAF
123.05

NOTE: Turbojet departures at/above 10000, maintain 280K until advised by ATC.



NOTE: Chart not to scale.

DEPARTURE ROUTE DESCRIPTION

TAKEOFF RUNWAY 10: Climb on heading 096° to 1400 then as assigned by ATC, thence....
TAKEOFF RUNWAY 28: Climb on heading 276° to 1500 then as assigned by ATC, thence....

....for RADAR vectors to MTRCT, then on track 279° to KAYLN, then on (transition). Maintain ATC assigned altitude, expect filed altitude 10 minutes after departure.

SMUUV TRANSITION (KAYLN3.SMUUV):

KAYLN THREE DEPARTURE (RNAV)

(KAYLN3.KAYLN) 16MAY24

TROY, MICHIGAN

OAKLAND/TROY (VLL)

EC-1, 26 DEC 2024 to 23 JAN 2025