

APP CRS <b>096°</b>	Rwy Idg TDZE Apt Elev	<b>3549</b> <b>727</b> <b>727</b>
------------------------	-----------------------------	---

# RNAV (GPS) RWY 10

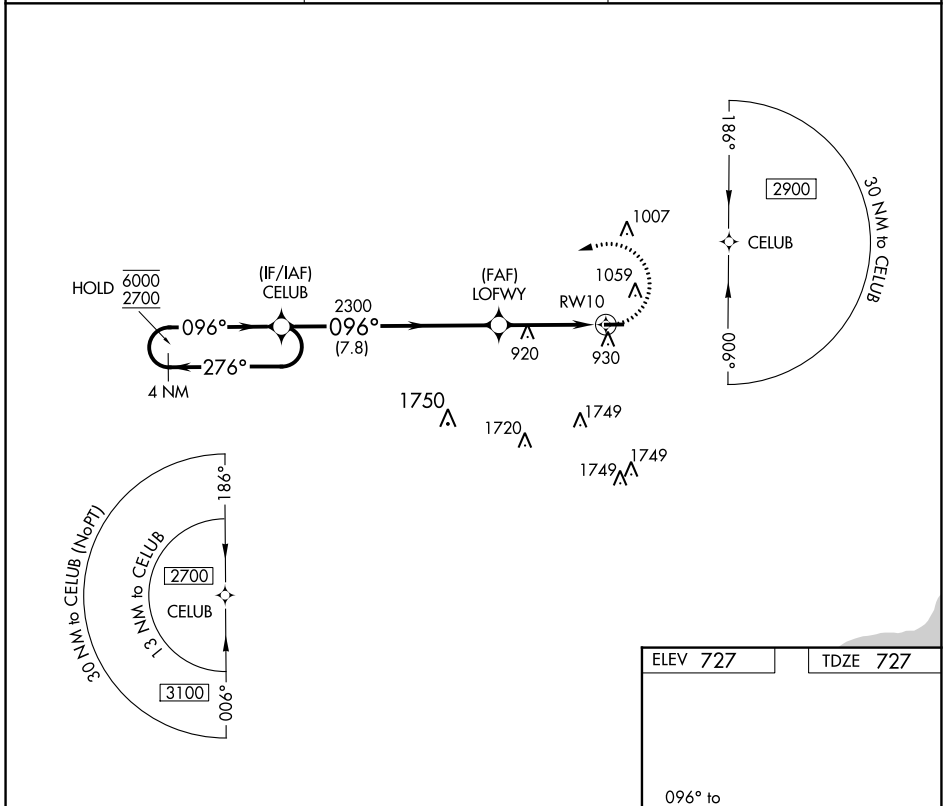
OAKLAND/TROY (VLL)

RNP APCH - GPS.

**⚠** Circling to Rwy 28 NA at night. Rwy 10 helicopter visibility reduction below 1 SM NA.  
**⚠** Straight-in Rwy 10 at night, operational VGSI required, remain on or above VGSI glidepath until threshold.

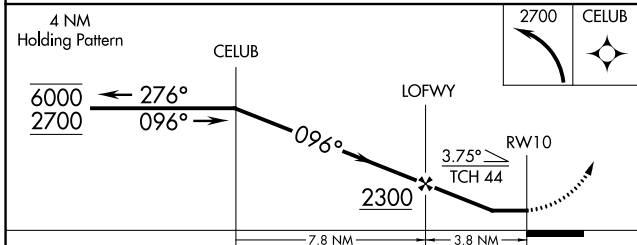
**MISSED APPROACH:**  
 Climbing left turn to 2700  
 direct CELUB and hold.

AWOS-3 <b>119.475</b>	DETROIT APP CON <b>132.35 284.0</b>	UNICOM <b>123.05 (CTAF) 0</b>
--------------------------	--	----------------------------------



EC-1, 26 DEC 2024 to 23 JAN 2025

EC-1, 26 DEC 2024 to 23 JAN 2025



ELEV 727	TDZE 727
----------	----------

CATEGORY	A	B	C	D
LNVA MDA	1220-1	493 (500-1)	1220-1 <sup>3</sup> / <sub>8</sub> 493 (500-1 <sup>3</sup> / <sub>8</sub> )	NA
<b>C</b> CIRCLING	1400-1	673 (700-1)	1400-1 <sup>1</sup> / <sub>2</sub> 673 (700-1 <sup>1</sup> / <sub>2</sub> )	NA

MIRL Rwy 9-27 **0**