

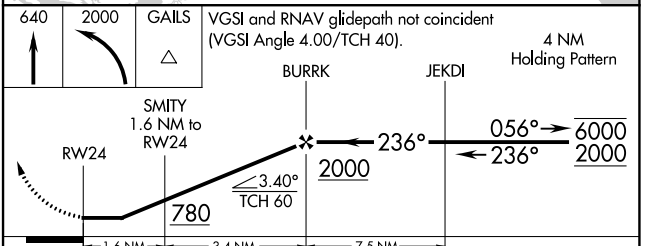
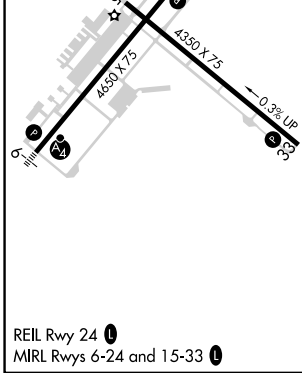
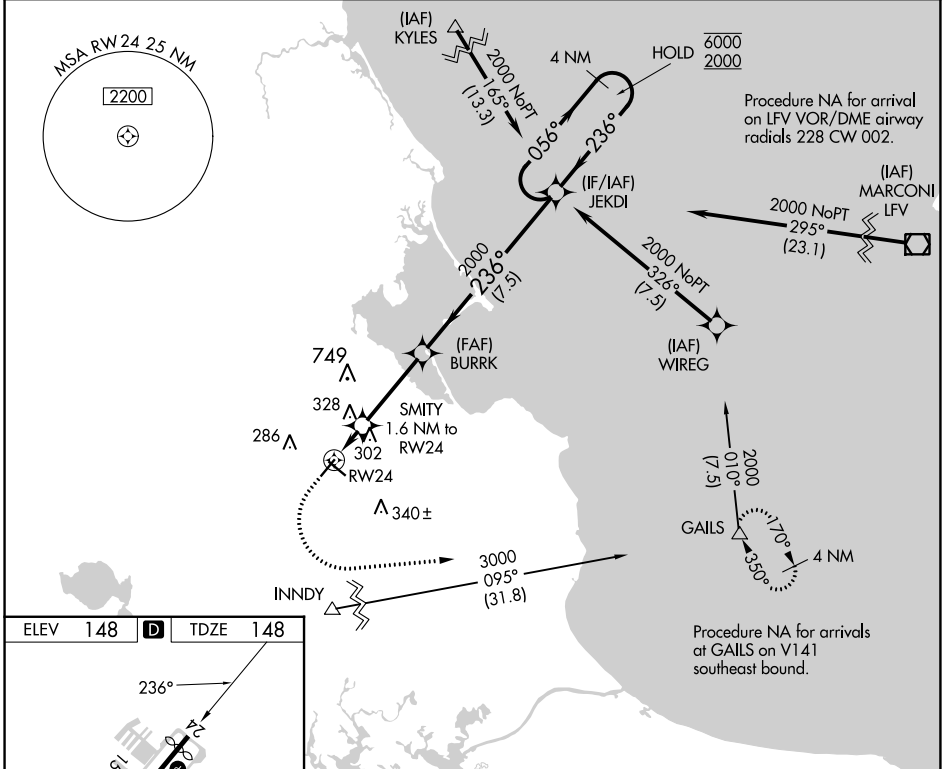
APP CRS	Rwy Idg	<b>4350</b>
<b>236°</b>	TDZE	<b>148</b>
	Apt Elev	<b>148</b>

# RNAV (GPS) RWY 24

PLYMOUTH MUNI (PYM)

RNP APCH - GPS.		MISSED APPROACH: Climb to 640 then climbing left turn to 2000 direct GAILS and hold.	
<p><b>⚠</b> Rwy 24 helicopter visibility reduction below 1 SM NA. Circling Rwy 15 NA at night.</p>			

ASOS <b>135.625</b>	BOSTON APP CON <b>118.2 284.6</b>	CLNC DEL <b>127.75</b>	UNICOM <b>122.725</b> (CTAF)	<b>122.9</b> <b>0</b>
------------------------	--------------------------------------	---------------------------	---------------------------------	-----------------------



CATEGORY	A	B	C	D
LNVA MDA	580-1	432 (500-1)	580-1¼ 432 (500-1¼)	NA
<b>C</b> CIRCLING	620-1 472 (500-1)	640-1 492 (500-1)	760-1¾ 612 (700-1¾)	NA

NE-1, 26 DEC 2024 to 23 JAN 2025

NE-1, 26 DEC 2024 to 23 JAN 2025